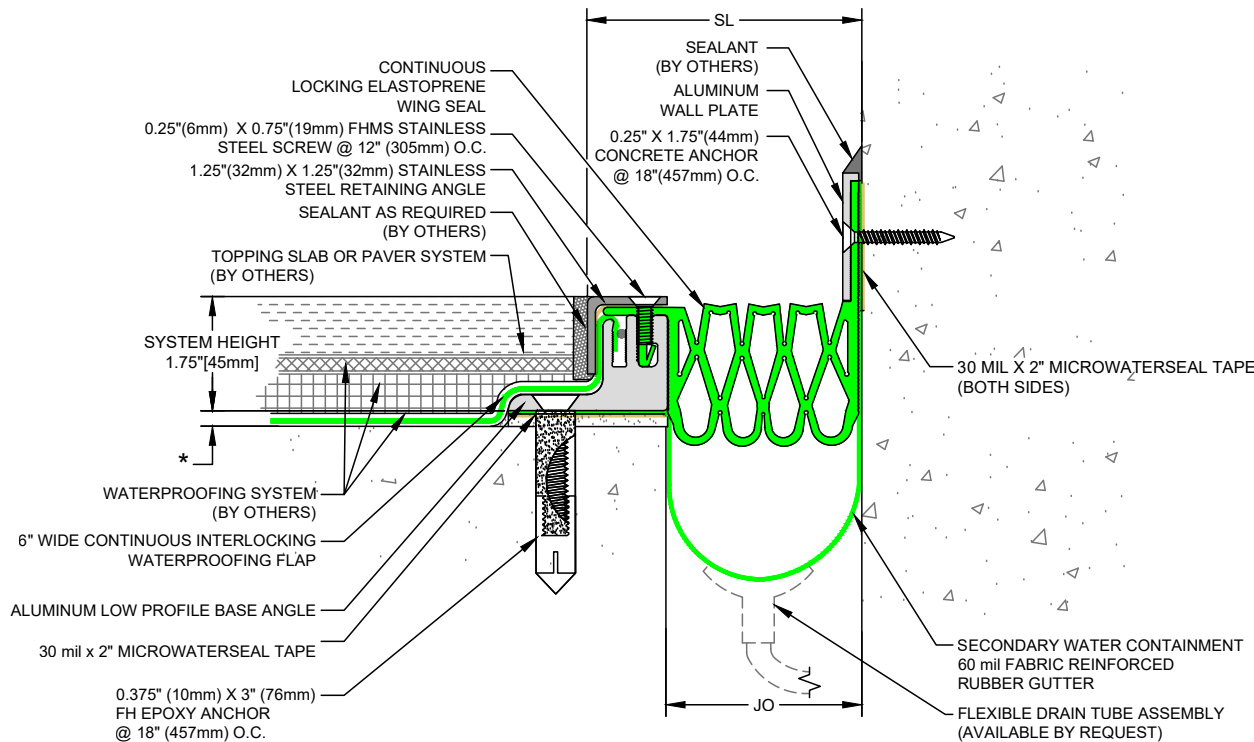
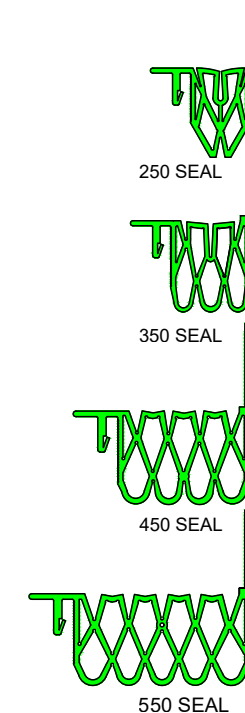


Model Number	Nominal (JO _n)		Nominal (SL _n)		Thermal Movement (JO _t)				Seismic Movement (JO _s)				Total (JO _t) Movement	
	Minimum	Maximum	Minimum	Maximum	Minimum	Maximum	Minimum	Maximum	Minimum	Maximum	Minimum	Maximum		
SSM-C-250LP	1.50	38	3.00	76	0.75	19	2.50	64	0.75	19	3.25	83	2.50	64
SSM-C-350LP	2.25	57	3.50	89	1.00	25	3.50	89	1.00	25	4.25	108	3.25	83
SSM-C-450LP	3.00	76	4.25	108	1.50	38	4.50	114	1.50	38	5.50	140	4.00	102
SSM-C-550LP	4.00	102	5.25	133	1.50	38	5.50	140	1.50	38	6.50	165	5.00	127

Dimension shown in inches (bold) and millimeters. JO = Joint Opening. SL = Sight Line. Color Options for rubber seals are Black or Special Order Gray.



SSM-C-LP Series Expansion Joint
(Slab-to-Wall)

* NOTE: LEVELING BED (BY OTHERS) ADJUSTED IN FIELD AS NECESSARY TO ACHIEVE PROPER ELEVATION



50 MM WAY
PENDERGRASS, GA. 30567
706-824-7500 PHONE
866-506-6929 TOLL FREE
706-824-7501 FAX

www.mm-usa.com

For Spec-Data Sheets, Install Guides and other data visit www.mm-usa.com

RIGHTS OF DESIGN

All rights of design, detail, engineering and/or invention contained herein are the property of MM Systems Corporation and hereby reserved and are not to be reproduced or provided to any other party. MM Systems Corporation reserves the right to amend or withdraw any information contained herein without notice and will not be liable for any inaccuracy or ambiguity of said information.

Split Slab Membrane Expansion joint
SSM-C-LP Series / Low Profile

Drawn by:
DMW

Scale:
NTS

Drawing Number:

Sheet 1 of 1

Issue Date:
02-01-2019

41200-04