

Model Number	Nominal (JO <sub>N</sub> )		Nominal (SL <sub>N</sub> )		Thermal Movement (JO <sub>T</sub> )				Seismic Movement (JO <sub>S</sub> )				Total (JO <sub>Δ</sub> ) Movement	
	Minimum	Maximum	Minimum	Maximum	Minimum	Maximum	Minimum	Maximum	Minimum	Maximum	Minimum	Maximum		
SSM-250LP	<b>1.50</b>	38	<b>4.00</b>	102	<b>0.75</b>	19	<b>2.50</b>	64	<b>0.75</b>	19	<b>3.25</b>	83	<b>2.50</b>	64
SSM-350LP	<b>2.00</b>	57	<b>4.75</b>	121	<b>1.00</b>	25	<b>3.50</b>	89	<b>1.00</b>	25	<b>4.25</b>	108	<b>3.25</b>	83
SSM-450LP	<b>3.00</b>	76	<b>5.50</b>	140	<b>1.50</b>	38	<b>4.50</b>	114	<b>1.50</b>	38	<b>5.50</b>	140	<b>4.00</b>	102
SSM-550LP	<b>4.00</b>	102	<b>6.50</b>	165	<b>1.50</b>	38	<b>5.50</b>	140	<b>1.50</b>	38	<b>6.50</b>	165	<b>5.00</b>	127

Dimension shown in inches (bold) and millimeters. JO = Joint Opening. SL = Sight Line. Color Options for rubber seals are Black or Special Order Gray.

RUBBER SEAL PROFILES



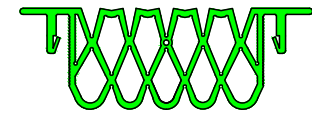
250 SEAL



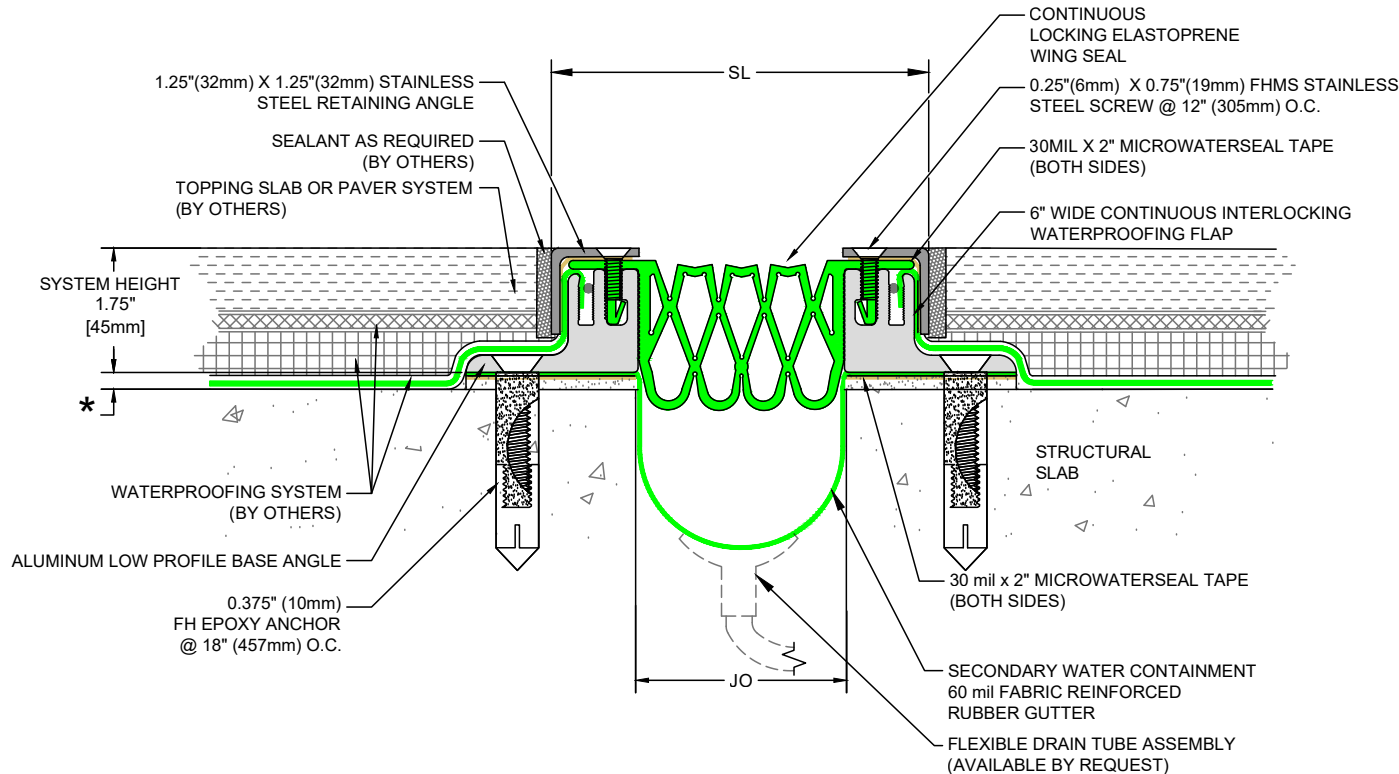
350 SEAL



450 SEAL



550 SEAL



**SSM-LP Series Expansion Joint**  
(Slab-to-Slab)

\* NOTE: LEVELING BED (BY OTHERS) ADJUSTED IN FIELD AS NECESSARY TO ACHIEVE PROPER ELEVATION



50 MM WAY  
PENDERGRASS, GA. 30567  
706-824-7500 PHONE  
866-506-6929 TOLL FREE  
706-824-7501 FAX

[www.mm-usa.com](http://www.mm-usa.com)

For Spec-Data Sheets, Install Guides and other data visit [www.mm-usa.com](http://www.mm-usa.com)

**RIGHTS OF DESIGN**

All rights of design, detail, engineering and/or invention contained herein are the property of MM Systems Corporation and hereby reserved and are not to be reproduced or provided to any other party. MM Systems Corporation reserves the right to amend or withdraw any information contained herein without notice and will not be liable for any inaccuracy or ambiguity of said information.

**Split Slab Membrane Expansion joint**

**SSM-LP Series / Low Profile**

Drawn by:  
DMW

Scale:  
NTS

Drawing Number:

Sheet 1 of 1

Issue Date:  
02-01-2019

**41200-03**