

Model Number	Nominal (JO _n)		Nominal (SL _n)		Thermal Movement (JO _t)		Seismic Movement (JO _s)		Total (JO _t)		Slide Plate Thickness (ST)					
	Minimum	Maximum	Minimum	Maximum	Minimum	Maximum	Minimum	Maximum	Minimum	Maximum	Minimum	Maximum				
SSD-C-800	8.00	203	10.875	356	4.00	102	12.00	305	2.67	68	12.00	305	9.33	237	0.375	10
SSD-C-900	9.00	229	11.875	432	4.50	114	13.50	343	3.00	76	13.50	343	10.50	267	0.375	10
SSD-C-1000	10.00	254	12.875	432	5.00	127	15.00	381	3.33	85	15.00	381	11.67	296	0.375	10
SSD-C-1100	11.00	279	13.875	508	5.50	140	15.00	381	3.67	93	16.50	419	12.83	326	0.5	13
SSD-C-1200	12.00	305	14.875	508	6.00	152	16.00	406	4.00	102	18.00	457	14.00	356	0.5	13

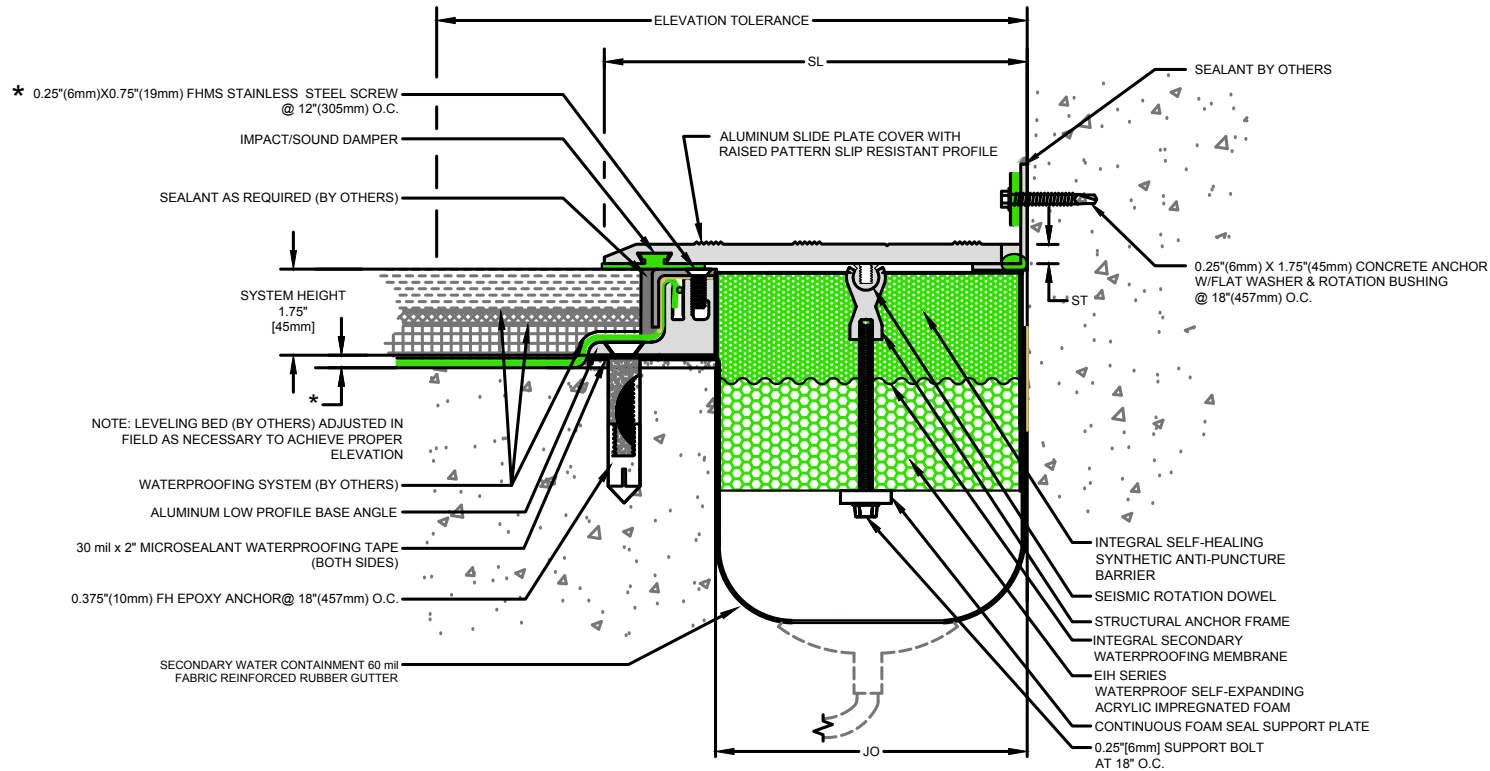
Dimension shown in inches (bold) and millimeters. JO = Joint Opening, SL = Sight Line. Color Options for rubber seals are Black or Special Order Gray.

Safety Max. - Safety Margin Movement capacity accommodates concrete shrinkage, vertical deflection and unexpected movement.

Waterproofing Membrane Compatibility confirm with membrane manufacturer grade of rubber to be used on waterproofing splice flap.

Elevation Tolerance - Surface areas two feet on each side of the expansion joint opening shall have identical elevations creating flush slab-to-slab transition.

See drawing 40075-06 for SSD-400LP through 700LP.



SSD-C-LP Series Expansion Joint
(Slab-to-Wall)



50 MM WAY
PENDERGRASS, GA. 30567
706-824-7500 PHONE
866-506-6929 TOLL FREE
FAX: 706-824-7501 FAX

www.mm-usa.com

For Spec-Data, Install Guides and other data visit www.mm-usa.com

RIGHTS OF DESIGN

All rights of design, detail, engineering and/or invention contained herein are the property of MM Systems Corporation and hereby reserved and are not to be reproduced or provided to any other party. MM Systems Corporation reserves the right to amend or withdraw any information contained herein without notice and will not be liable for any inaccuracy or ambiguity of said information.

Split Slab Dual Seismic Foam Seal Expansion Joint

SSD-C-800 through 1200 Low Profile (LP) Series

Drawn by: DMW	Scale: NTS	Drawing Number: 40075-08
SHT. 1 OF 2	Issue Date: 06-23-2017	

Model Number	Nominal (JO _N)		Nominal (SL _N)		Thermal Movement (JO _T)				Seismic Movement (JO _S)				Total (JO _T) Movement		Slide Plate Thickness (ST)	
	Minimum	Maximum	Minimum	Maximum	Minimum	Maximum	Minimum	Maximum	Minimum	Maximum	Minimum	Maximum	Minimum	Maximum	Minimum	Maximum
SSD-C-800	8.00	203	10.875	356	4.00	102	12.00	305	2.67	68	12.00	305	9.33	237	0.375	10
SSD-C-900	9.00	229	11.875	432	4.50	114	13.50	343	3.00	76	13.50	343	10.50	267	0.375	10
SSD-C-1000	10.00	254	12.875	432	5.00	127	15.00	381	3.33	85	15.00	381	11.67	296	0.375	10
SSD-C-1100	11.00	279	13.875	508	5.50	140	15.00	381	3.67	93	16.50	419	12.83	326	0.5	13
SSD-C-1200	12.00	305	14.875	508	6.00	152	16.00	406	4.00	102	18.00	457	14.00	356	0.5	13

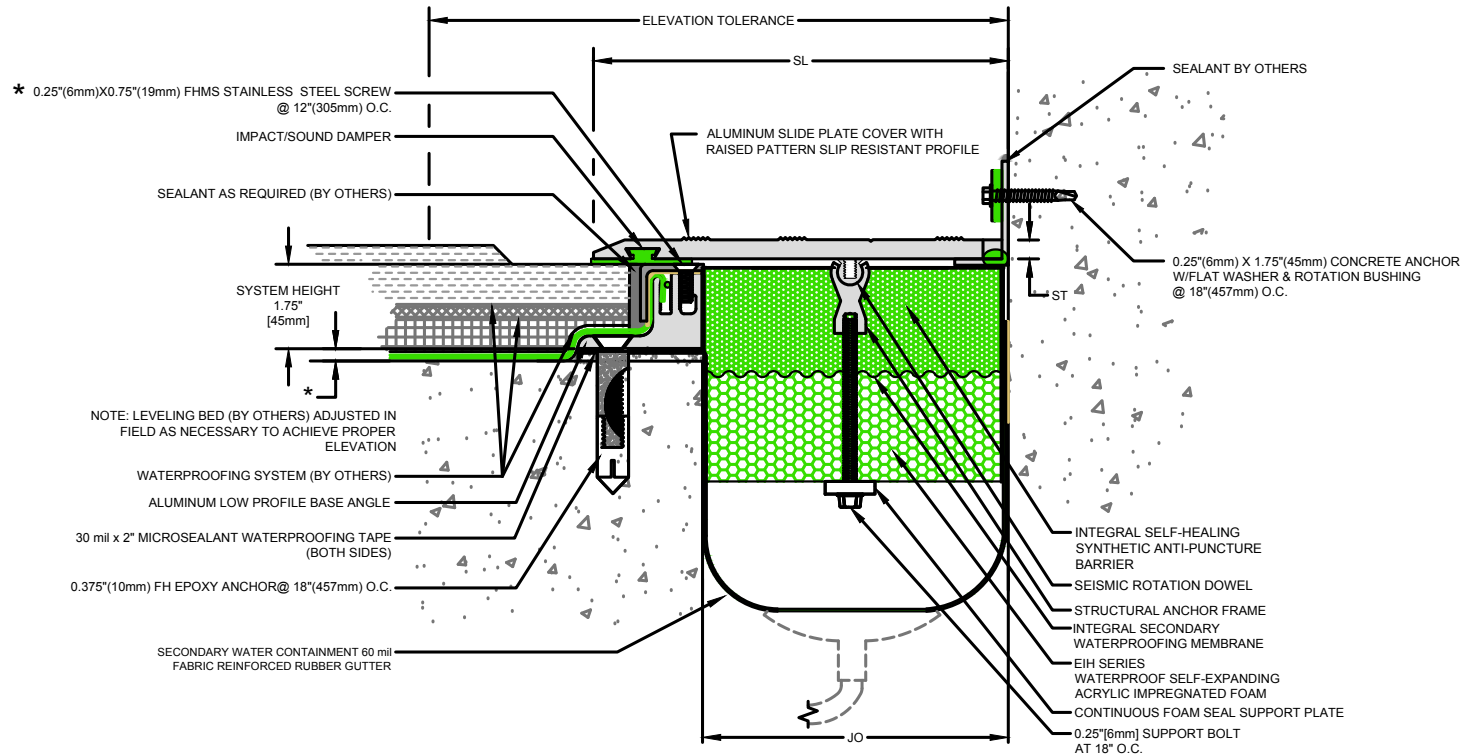
Dimension shown in inches (bold) and millimeters. JO = Joint Opening, SL = Sight Line. Color Options for rubber seals are Black or Special Order Gray.

Safety Max. - Safety Margin Movement capacity accommodates concrete shrinkage, vertical deflection and unexpected movement.

Waterproofing Membrane Compatibility confirm with membrane manufacturer grade of rubber to be used on waterproofing splice flap.

Elevation Tolerance - Surface areas two feet on each side of the expansion joint opening shall have identical elevations creating flush slab-to-slab transition.

See drawing 40075-06 for SSD-400LP through 700LP.



SSD-C-LP Recessed Series Expansion Joint

(Slab-to-Wall)



50 MM WAY
 PENDERGRASS, GA. 30567
 706-824-7500 PHONE
 866-506-6929 TOLL FREE
 FAX: 706-824-7501 FAX

www.mm-usa.com

For Spec-Data, Install Guides and other data visit www.mm-usa.com

RIGHTS OF DESIGN

All rights of design, detail, engineering and/or invention contained herein are the property of MM Systems Corporation and hereby reserved and are not to be reproduced or provided to any other party. MM Systems Corporation reserves the right to amend or withdraw any information contained herein without notice and will not be liable for any inaccuracy or ambiguity of said information.

Split Slab Dual Seismic Foam Seal Expansion Joint

SSD-C-800 through 1200 Low Profile (LP) Series

Drawn by: DMW	Scale: NTS	Drawing Number: 40075-08
SHT. 2 OF 2	Issue Date: 06-23-2017	