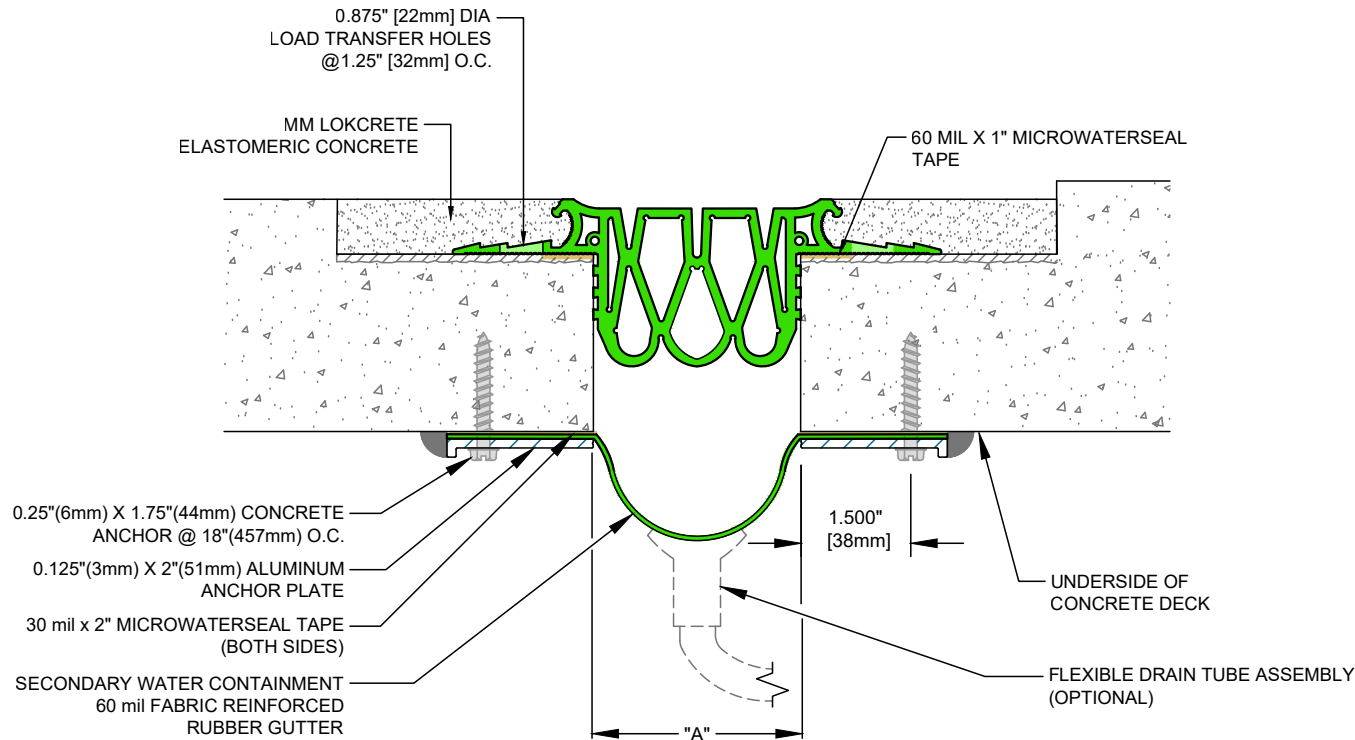


Model Number	Total Movement		Joint Opening "A"				Installation Range "A"				Depth "B"			
			Minimum	Nominal	Maximum	Minimum	Maximum							
LMS-100 w/ FGS-12	0.875	22	0.375	10	0.625	16	1.00	25	0.50	13	0.75	19	2.500	64
LMS-150 w/ FGS-12	1.25	32	0.50	13	1.00	25	1.50	38	0.75	19	1.25	32	2.625	67
LMS-250 w/ FGS-12	2.50	64	0.75	19	1.75	44	2.50	64	1.25	32	2.25	57	3.000	76
LMS-350 w/ FGS-12	3.25	83	1.00	25	2.50	64	3.50	89	1.50	38	3.25	83	2.500	64
LMS-450HD w/ FGS-18	4.00	102	1.50	38	3.00	76	4.50	114	2.25	57	4.25	108	3.500	89
LMS-550HD w/ FGS-18	5.00	127	1.50	38	4.50	114	6.00	152	3.00	76	5.25	133	4.250	108

Dimensions shown in **inches** (bold) and millimeters. Color Options for LokCrete and Seal - Black or Special Order Gray.

Safety Margin Movement - seals engineered with an additional 0.50 inch of movement capacity (not included in table above) to accommodate concrete shrinkage, vertical deflection and unexpected movement.



LMS with FGS Series Gutter System (Slab-to-Slab)



50 MM WAY
PENDERGRASS, GA. 30567
706-824-7500 PHONE
800-241-3460 TOLL FREE
706-824-7501 FAX

www.mm-usa.com

For Spec-Data, Install Guides and other data visit www.mm-usa.com

RIGHTS OF DESIGN

All rights of design, detail, engineering and/or invention contained herein are the property of MM Systems Corporation and hereby reserved and are not to be reproduced or provided to any other party. MM Systems Corporation reserves the right to amend or withdraw any information contained herein without notice and will not be liable for any inaccuracy or ambiguity of said information.

LokCrete Membrane System Expansion Joint LMS with FGS Series

Drawn by:
DMW

Scale:
NTS

Drawing Number:

SHT. 1 OF 1

Issue Date:
02-06-2019

30102-06