

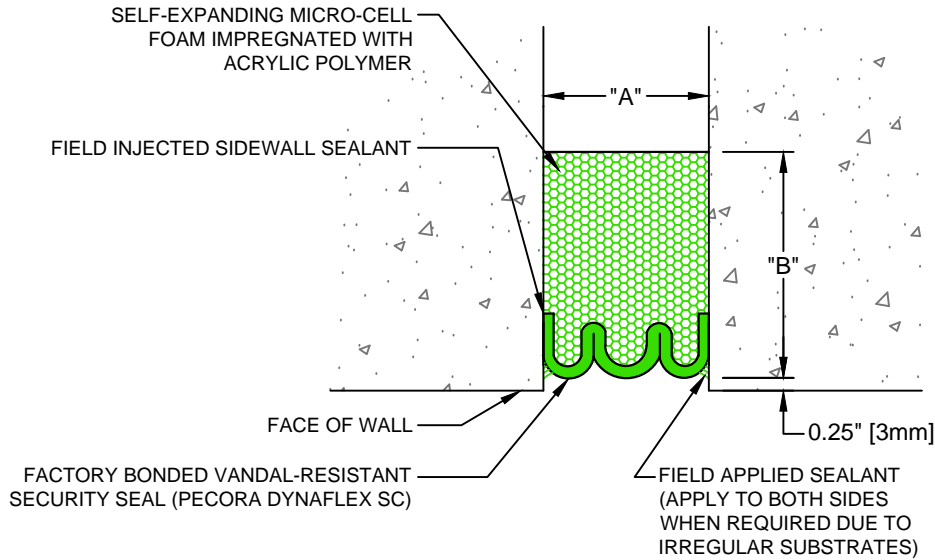
Model Number	Total Movement		Joint Opening "A"						Seal Depth "B"	
			Min.		Nominal		Max.			
EIV-050	0.50	13	0.250	6	0.50	13	0.750	19	1.50	38
EIV-063	0.63	16	0.312	8	0.63	16	0.938	24	1.50	38
EIV-075	0.75	19	0.375	10	0.75	19	1.125	29	1.50	38
EIV-100	1.00	25	0.500	13	1.00	25	1.500	38	2.00	51
EIV-125	1.25	32	0.625	16	1.25	32	1.875	48	2.00	51
EIV-150	1.50	38	0.750	19	1.50	38	2.250	57	2.00	51
EIV-175	1.75	44	0.875	22	1.75	44	2.625	67	2.00	51
EIV-200	2.00	51	1.000	25	2.00	51	3.000	76	3.00	76
EIV-225	2.25	57	1.125	29	2.25	57	3.375	86	3.00	76
EIV-250	2.50	64	1.250	32	2.50	64	3.750	95	3.00	76
EIV-275	2.75	70	1.375	35	2.75	70	4.150	105	3.00	76

Model Number	Total Movement		Joint Opening "A"						Seal Depth "B"	
			Min.		Nominal		Max.			
EIV-300	3.00	76	1.500	38	3.00	76	4.500	114	3.00	76
EIV-325	3.25	83	1.562	40	3.25	83	4.812	122	3.00	76
EIV-350	3.50	89	1.750	44	3.50	89	5.250	133	3.00	76
EIV-375	3.75	95	1.875	48	3.75	95	5.625	143	3.00	76
EIV-400	4.00	102	2.000	51	4.00	102	6.000	152	3.00	76

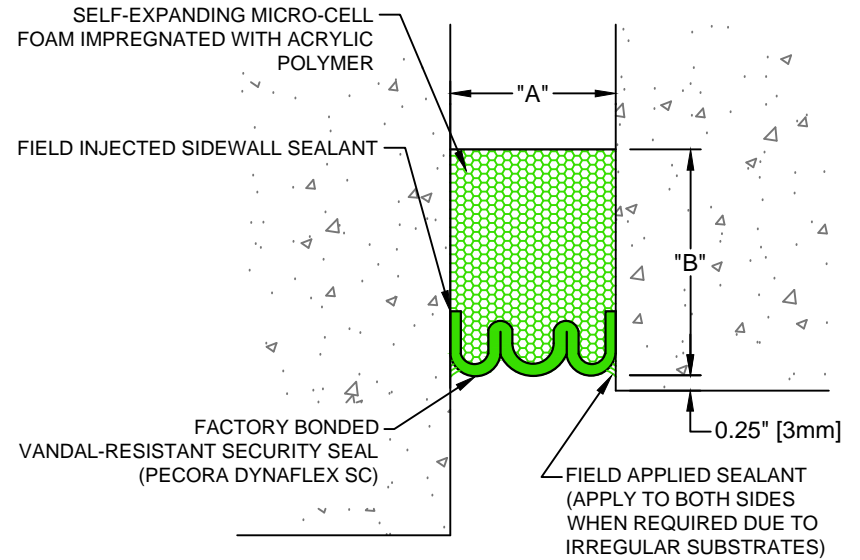
Dimension shown in **inches** (bold) and millimeters. For Color Options see Spec Data sheet.

NOTES:

- 1) THE SELF-EXPANDING SIF SERIES IS PRE-COMPRESSED IN THE FACTORY TO 0.25" LESS THAN THE NOMINAL JOINT OPENING "A" DIMENSION.
- 2) APPLICATIONS: BRICK, MASONRY BLOCK, PRECAST PANELS, CURTAIN WALLS, METAL CLADDING, EIFS APPLICATIONS AND GENERAL BUILDING FACADES. ALL APPLICATIONS REQUIRE A STRUCTURAL SIDEWALL SUBSTRATE.



EIV Series Expansion Joint  
(Wall-to-Wall)



EIV Series Expansion Joint  
(Wall-to-Corner)



50 MM WAY  
PENDERGRASS, GA. 30567  
PHONE: 706-824-7500  
866-506-6929  
FAX: 706-824-7501

[www.mm-usa.com](http://www.mm-usa.com)

For Spec-Data, Installation Guides, or movement requirements, contact MMSC

**RIGHTS OF DESIGN**

All rights of design, detail, engineering and/or invention contained herein are the property of MM Systems Corporation and hereby reserved and are not to be reproduced or provided to any other party. MM Systems Corporation reserves the right to amend or withdraw any information contained herein without notice and will not be liable for any inaccuracy or ambiguity of said information.

**Expanding Impregnated Vandel-Resistant Expansion Joint**

**EIV Series**

Drawn by: DMW	Scale: NTS	Drawing Number: <b>30475-01</b>
Sheet: 1 OF 1	Issue Date: 03-25-2015	