

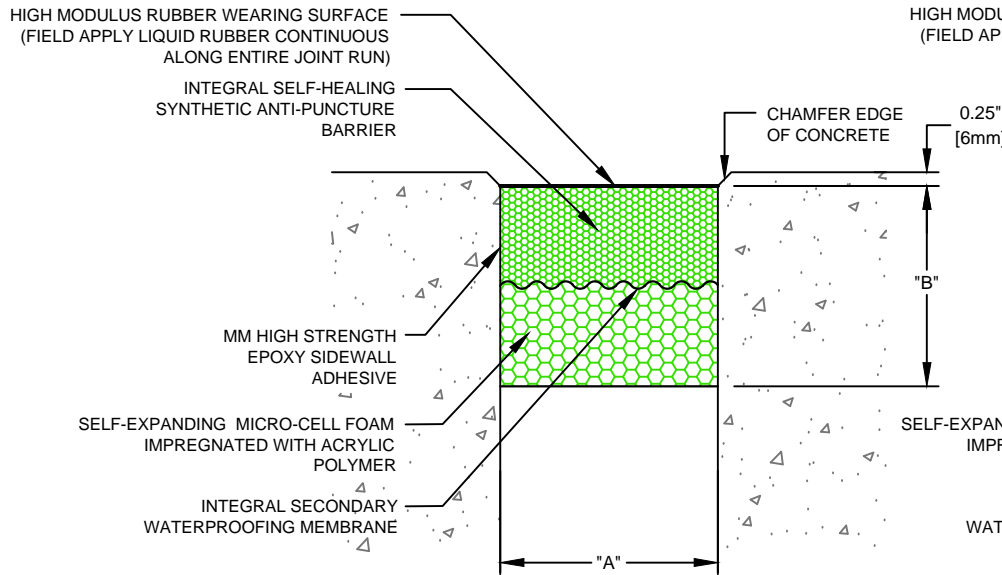
| Model Number | Total Movement | | Joint Opening "A" | | Installation "A" | | Joint Depth "B" | | | |
|--------------|----------------|----|-------------------|------|------------------|-----|-----------------|----|-------------|----|
| | | | Min. | Max. | Nominal | | | | | |
| EIH-050 | 0.50 | 13 | 0.250 | 6 | 0.750 | 19 | 0.50 | 13 | 1.50 | 38 |
| EIH-063 | 0.63 | 16 | 0.312 | 8 | 0.938 | 24 | 0.63 | 16 | 1.50 | 38 |
| EIH-075 | 0.75 | 19 | 0.375 | 10 | 1.125 | 29 | 0.75 | 19 | 1.50 | 38 |
| EIH-100 | 1.00 | 25 | 0.500 | 13 | 1.500 | 38 | 1.00 | 25 | 2.00 | 51 |
| EIH-125 | 1.25 | 32 | 0.625 | 16 | 1.875 | 48 | 1.25 | 32 | 2.00 | 51 |
| EIH-150 | 1.50 | 38 | 0.750 | 19 | 2.250 | 57 | 1.50 | 38 | 2.00 | 51 |
| EIH-175 | 1.75 | 44 | 0.875 | 22 | 2.625 | 67 | 1.75 | 44 | 2.00 | 51 |
| EIH-200 | 2.00 | 51 | 1.000 | 25 | 3.000 | 76 | 2.00 | 51 | 3.00 | 76 |
| EIH-225 | 2.25 | 57 | 1.125 | 29 | 3.375 | 86 | 2.25 | 57 | 3.00 | 76 |
| EIH-250 | 2.50 | 64 | 1.250 | 32 | 3.750 | 95 | 2.50 | 64 | 3.00 | 76 |
| EIH-275 | 2.75 | 70 | 1.375 | 35 | 4.150 | 105 | 2.75 | 70 | 3.00 | 76 |

| Model Number | Total Movement | | Joint Opening "A" | | Installation "A" | | Joint Depth "B" | | | |
|--------------|----------------|-----|-------------------|------|------------------|-----|-----------------|-----|-------------|----|
| | | | Min. | Max. | Nominal | | | | | |
| EIH-300 | 3.00 | 76 | 1.500 | 38 | 4.500 | 114 | 3.00 | 76 | 3.00 | 76 |
| EIH-325 | 3.25 | 83 | 1.562 | 40 | 4.812 | 122 | 3.25 | 83 | 3.00 | 76 |
| EIH-350 | 3.50 | 89 | 1.750 | 44 | 5.250 | 133 | 3.50 | 89 | 3.00 | 76 |
| EIH-375 | 3.75 | 95 | 1.875 | 48 | 5.625 | 143 | 3.75 | 95 | 3.00 | 76 |
| EIH-400 | 4.00 | 102 | 2.000 | 51 | 6.000 | 152 | 4.00 | 102 | 3.00 | 76 |

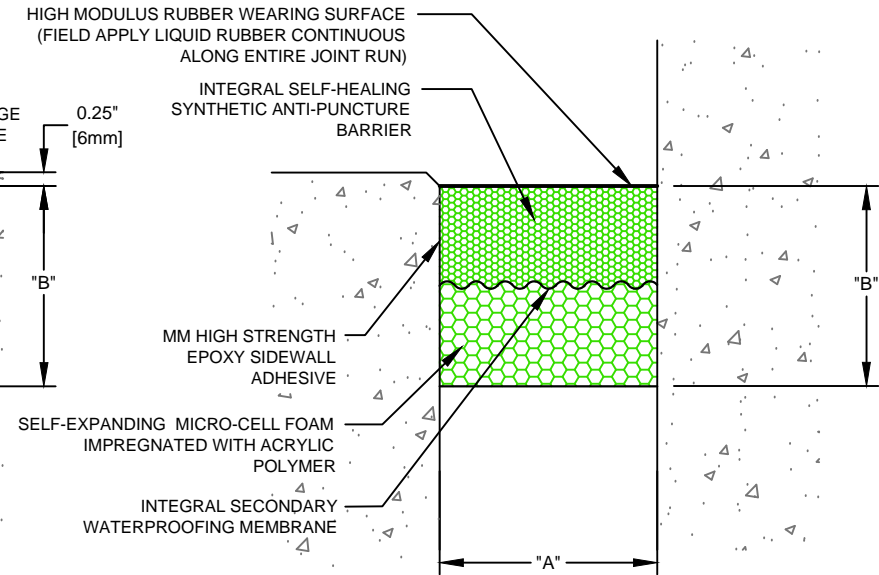
Dimension shown in **inches** (bold) and millimeters. Contact MM Systems for other sizes.

NOTES:

- 1) THE SELF-EXPANDING EIH SERIES IS PRE-COMPRESSED IN THE FACTORY TO 0.25" LESS THAN THE NOMINAL JOINT OPENING "A" DIMENSION.
- 2) MM HIGH STRENGTH EPOXY SIDEWALL ADHESIVE REQUIRED ON ALL EIH SEALS.



EIH Expansion Joint
(Slab-to-Slab)



EIH Expansion Joint
(Slab-to-Wall)



50 MM WAY
PENDERGRASS, GA. 30567
PHONE: 706-824-7500
866-506-6929
FAX: 706-824-7501

www.mm-usa.com

For Spec-Data, Installation Guides, or movement requirements, contact MMSC

RIGHTS OF DESIGN

All rights of design, detail, engineering and/or invention contained herein are the property of MM Systems Corporation and hereby reserved and are not to be reproduced or provided to any other party. MM Systems Corporation reserves the right to amend or withdraw any information contained herein without notice and will not be liable for any inaccuracy or ambiguity of said information.

Expanding Impregnated Self-Healing Expansion Joint EIH Series

Drawn by:

DMW

Scale:

NTS

Drawing Number:

Sheet: 1 OF 1

Issue Date:
03-25-2015

30450-01