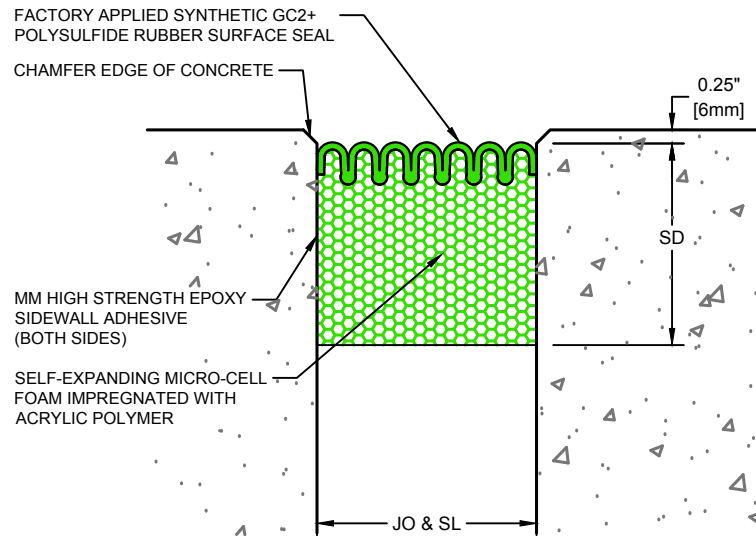


Model Number	Nominal (JO <sub>N</sub> ) & (SL <sub>N</sub> )	Thermal Movement (JO <sub>T</sub> )		Seismic Movement (JO <sub>S</sub> )		Total (JO <sub>Δ</sub> ) Movement		Seal Depth (SD)	
		Minimum	Maximum	Minimum	Maximum	Minimum	Maximum	Minimum	Maximum
EIC-050	<b>0.50</b> 13	<b>0.375</b> 10	<b>0.6250</b> 16	<b>0.375</b> 10	<b>0.6250</b> 16	<b>0.2500</b> 6	<b>1.50</b> 38		
EIC-063	<b>0.63</b> 16	<b>0.473</b> 12	<b>0.7875</b> 20	<b>0.473</b> 12	<b>0.7875</b> 20	<b>0.3150</b> 8	<b>1.50</b> 38		
EIC-075	<b>0.75</b> 19	<b>0.563</b> 14	<b>0.9375</b> 24	<b>0.563</b> 14	<b>0.9375</b> 24	<b>0.3750</b> 10	<b>1.50</b> 38		
EIC-100	<b>1.00</b> 25	<b>0.750</b> 19	<b>1.2500</b> 32	<b>0.750</b> 19	<b>1.2500</b> 32	<b>0.5000</b> 13	<b>2.00</b> 51		
EIC-125	<b>1.25</b> 32	<b>0.938</b> 24	<b>1.5625</b> 40	<b>0.938</b> 24	<b>1.5625</b> 40	<b>0.6250</b> 16	<b>2.00</b> 51		
EIC-150	<b>1.50</b> 38	<b>1.125</b> 29	<b>1.8750</b> 48	<b>1.125</b> 29	<b>1.8750</b> 48	<b>0.7500</b> 19	<b>2.00</b> 51		
EIC-175	<b>1.75</b> 44	<b>1.313</b> 33	<b>2.1875</b> 56	<b>1.313</b> 33	<b>2.1875</b> 56	<b>0.8750</b> 22	<b>2.00</b> 51		
EIC-200	<b>2.00</b> 51	<b>1.500</b> 38	<b>2.5000</b> 64	<b>1.500</b> 38	<b>2.5000</b> 64	<b>1.0000</b> 25	<b>3.00</b> 76		
EIC-225	<b>2.25</b> 57	<b>1.688</b> 43	<b>2.8125</b> 71	<b>1.688</b> 43	<b>2.8125</b> 71	<b>1.1250</b> 29	<b>3.00</b> 76		
EIC-250	<b>2.50</b> 64	<b>1.875</b> 48	<b>3.1250</b> 79	<b>1.875</b> 48	<b>3.1250</b> 79	<b>1.2500</b> 32	<b>3.00</b> 76		
EIC-275	<b>2.75</b> 70	<b>2.063</b> 52	<b>3.4375</b> 87	<b>2.063</b> 52	<b>3.4375</b> 87	<b>1.3750</b> 35	<b>3.00</b> 76		
EIC-300	<b>3.00</b> 76	<b>2.250</b> 57	<b>3.7500</b> 95	<b>2.250</b> 57	<b>3.7500</b> 95	<b>1.5000</b> 38	<b>3.00</b> 76		
EIC-325	<b>3.25</b> 83	<b>2.438</b> 62	<b>4.0625</b> 103	<b>2.438</b> 62	<b>4.0625</b> 103	<b>1.6250</b> 41	<b>3.00</b> 76		
EIC-350	<b>3.50</b> 89	<b>2.625</b> 67	<b>4.3750</b> 111	<b>2.625</b> 67	<b>4.3750</b> 111	<b>1.7500</b> 44	<b>3.00</b> 76		
EIC-375	<b>3.75</b> 95	<b>2.813</b> 71	<b>4.6875</b> 119	<b>2.813</b> 71	<b>4.6875</b> 119	<b>1.8750</b> 48	<b>3.00</b> 76		
EIC-400	<b>4.00</b> 102	<b>3.000</b> 76	<b>5.0000</b> 127	<b>3.000</b> 76	<b>5.0000</b> 127	<b>2.0000</b> 51	<b>3.00</b> 76		
EIC-500	<b>5.00</b> 127	<b>3.750</b> 95	<b>6.2500</b> 159	<b>3.750</b> 95	<b>6.2500</b> 159	<b>2.5000</b> 64	<b>3.00</b> 76		
EIC-600	<b>6.00</b> 152	<b>4.500</b> 114	<b>7.5000</b> 191	<b>4.500</b> 114	<b>7.5000</b> 191	<b>3.0000</b> 76	<b>4.00</b> 102		
EIC-700	<b>7.00</b> 178	<b>5.250</b> 133	<b>8.7500</b> 222	<b>5.250</b> 133	<b>8.7500</b> 222	<b>3.5000</b> 89	<b>4.00</b> 102		
EIC-800	<b>8.00</b> 203	<b>6.000</b> 152	<b>10.0000</b> 254	<b>6.000</b> 152	<b>10.0000</b> 254	<b>4.0000</b> 102	<b>4.00</b> 102		

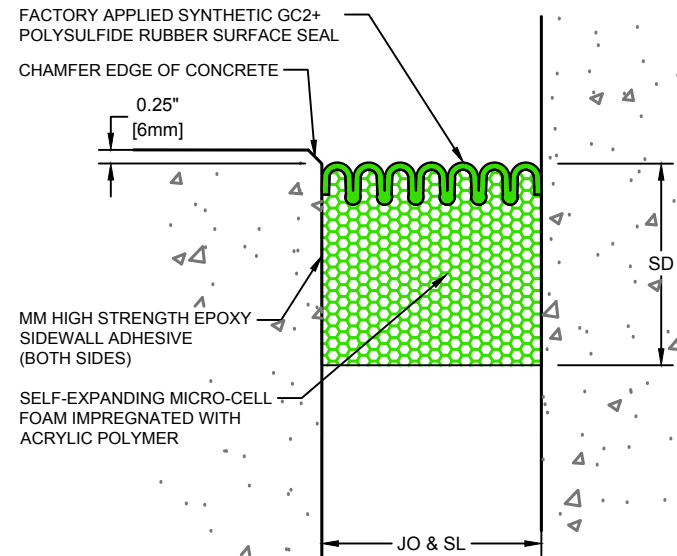
Dimension shown in inches (**bold**) and millimeters. JO=Joint Opening SL=Sight Line. Contact MM Systems for larger system sizes.

NOTES:

- 1) THE SELF-EXPANDING EIC SERIES IS PRE-COMPRESSED IN THE FACTORY TO 0.25" LESS THAN THE NOMINAL JOINT OPENING "A" DIMENSION.
- 2) FLEXIBLE SEALANT SIDEWALL ADHESIVE REQUIRED ON ALL EIC (VERTICAL) SEALS.
- 3) SEE EIC SPEC DATA SHEET FOR CHEMICAL RESISTANT CHART.



**EIC Expansion Joint**  
(Slab-to-Slab)



**EIC Expansion Joint**  
(Slab-to-Wall)



50 MM WAY  
PENDERGRASS, GA. 30567  
706-824-7500 PHONE  
800-241-3460 TOLL FREE  
706-824-7501 FAX

[www.mm-usa.com](http://www.mm-usa.com)

For Spec-Data, Install Guides, and other data visit [www.mm-usa.com](http://www.mm-usa.com).

**RIGHTS OF DESIGN**

All rights of design, detail, engineering and/or invention contained herein are the property of MM Systems Corporation and hereby reserved and are not to be reproduced or provided to any other party. MM Systems Corporation reserves the right to amend or withdraw any information contained herein without notice and will not be liable for any inaccuracy or ambiguity of said information.

**Expanding Impregnated Chemical Resistant Expansion Joint**  
**EIC Series (Horizontal)**

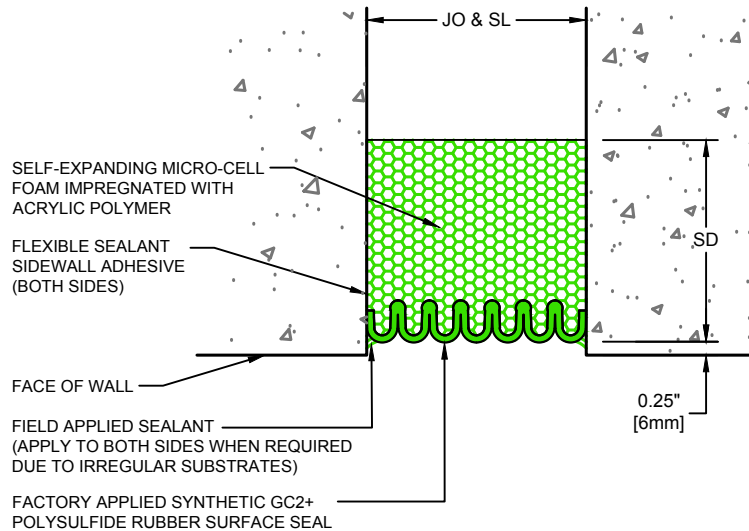
Drawn by: DMW	Scale: NTS	Drawing Number: <b>30275-01</b>
Sheet: 1 OF 2	Issue Date: 09-12-2016	

Model Number	Nominal (JO <sub>N</sub> ) & (SL <sub>N</sub> )		Thermal Movement (JO <sub>T</sub> )		Seismic Movement (JO <sub>S</sub> )		Total (JO <sub>S</sub> ) Movement		Seal Depth (SD)					
	Minimum	Maximum	Minimum	Maximum	Minimum	Maximum	Minimum	Maximum	Minimum	Maximum				
EIC-050	0.50	13	0.375	10	0.6250	16	0.375	10	0.6250	16	0.2500	6	1.50	38
EIC-063	0.63	16	0.473	12	0.7875	20	0.473	12	0.7875	20	0.3150	8	1.50	38
EIC-075	0.75	19	0.563	14	0.9375	24	0.563	14	0.9375	24	0.3750	10	1.50	38
EIC-100	1.00	25	0.750	19	1.2500	32	0.750	19	1.2500	32	0.5000	13	2.00	51
EIC-125	1.25	32	0.938	24	1.5625	40	0.938	24	1.5625	40	0.6250	16	2.00	51
EIC-150	1.50	38	1.125	29	1.8750	48	1.125	29	1.8750	48	0.7500	19	2.00	51
EIC-175	1.75	44	1.313	33	2.1875	56	1.313	33	2.1875	56	0.8750	22	2.00	51
EIC-200	2.00	51	1.500	38	2.5000	64	1.500	38	2.5000	64	1.0000	25	3.00	76
EIC-225	2.25	57	1.688	43	2.8125	71	1.688	43	2.8125	71	1.1250	29	3.00	76
EIC-250	2.50	64	1.875	48	3.1250	79	1.875	48	3.1250	79	1.2500	32	3.00	76
EIC-275	2.75	70	2.063	52	3.4375	87	2.063	52	3.4375	87	1.3750	35	3.00	76
EIC-300	3.00	76	2.250	57	3.7500	95	2.250	57	3.7500	95	1.5000	38	3.00	76
EIC-325	3.25	83	2.438	62	4.0625	103	2.438	62	4.0625	103	1.6250	41	3.00	76
EIC-350	3.50	89	2.625	67	4.3750	111	2.625	67	4.3750	111	1.7500	44	3.00	76
EIC-375	3.75	95	2.813	71	4.6875	119	2.813	71	4.6875	119	1.8750	48	3.00	76
EIC-400	4.00	102	3.000	76	5.0000	127	3.000	76	5.0000	127	2.0000	51	3.00	76
EIC-500	5.00	127	3.750	95	6.2500	159	3.750	95	6.2500	159	2.5000	64	3.00	76
EIC-600	6.00	152	4.500	114	7.5000	191	4.500	114	7.5000	191	3.0000	76	4.00	102
EIC-700	7.00	178	5.250	133	8.7500	222	5.250	133	8.7500	222	3.5000	89	4.00	102
EIC-800	8.00	203	6.000	152	10.0000	254	6.000	152	10.0000	254	4.0000	102	4.00	102

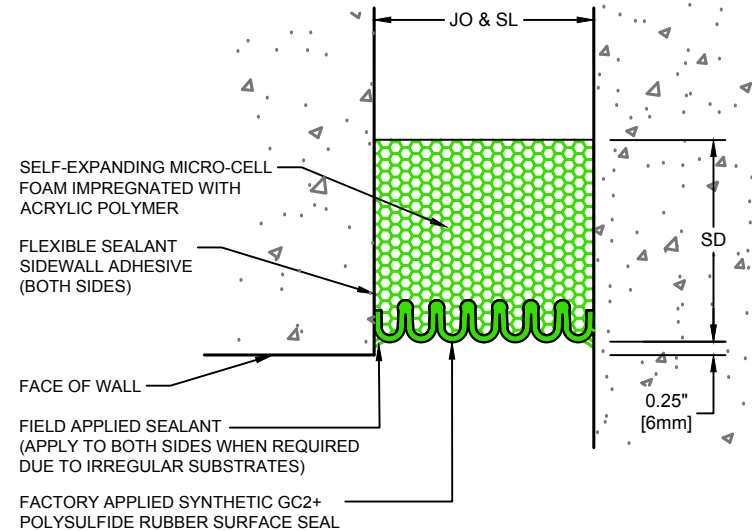
Dimension shown in inches (**bold**) and millimeters. JO=Joint Opening. SL=Sight Line. Contact MM Systems for larger system sizes.

NOTES:

- 1) THE SELF-EXPANDING EIC SERIES IS PRE-COMPRESSED IN THE FACTORY TO 0.25" LESS THAN THE NOMINAL JOINT OPENING "A" DIMENSION.
- 2) FLEXIBLE SEALANT SIDEWALL ADHESIVE REQUIRED ON ALL EIC (VERTICAL) SEALS.
- 3) SEE EIC SPEC DATA SHEET FOR CHEMICAL RESISTANT CHART.



EIC Expansion Joint  
(Wall-to-Wall)



EIC Expansion Joint  
(Wall-Corner)



50 MM WAY  
PENDERGRASS, GA. 30567  
706-824-7500 PHONE  
800-241-3460 TOLL FREE  
706-824-7501 FAX

[www.mm-usa.com](http://www.mm-usa.com)

For Spec-Data, Install Guides, and other data visit [www.mm-usa.com](http://www.mm-usa.com).

RIGHTS OF DESIGN

All rights of design, detail, engineering and/or invention contained herein are the property of MM Systems Corporation and hereby reserved and are not to be reproduced or provided to any other party. MM Systems Corporation reserves the right to amend or withdraw any information contained herein without notice and will not be liable for any inaccuracy or ambiguity of said information.

Expanding Impregnated Chemical Resistant Expansion Joint  
EIC Series (Vertical)

Drawn by: DMW	Scale: NTS	Drawing Number: 30275-01
Sheet: 2 OF 2	Issue Date: 09-12-2016	