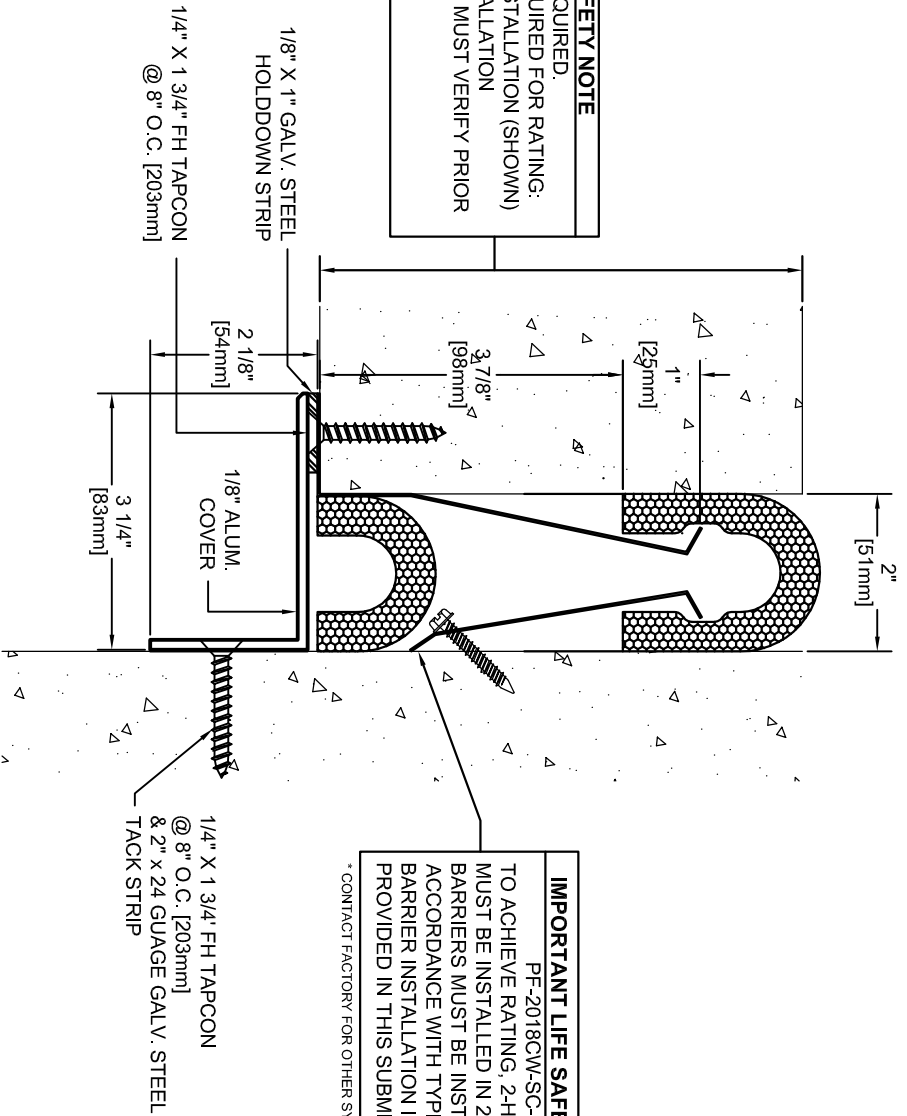


**IMPORTANT LIFE SAFETY NOTE**  
 NOTE 2 BARRIERS REQUIRED.  
 MINIMUM WALL DEPTH REQUIRED FOR RATING:  
 6.125" FOR SINGLE SIDE INSTALLATION (SHOWN)  
 6.125" FOR DUAL SIDE INSTALLATION  
 ARCHITECT / CONTRACTOR MUST VERIFY PRIOR  
 TO FABRICATION



**IMPORTANT LIFE SAFETY PRODUCT NOTE**  
 PF-2018CW-SC-2-1  
 TO ACHIEVE RATING, 2-HOUR FIRE BARRIER  
 MUST BE INSTALLED IN 2-HOUR RATED WALL.  
 BARRIERS MUST BE INSTALLED IN STRICT  
 ACCORDANCE WITH TYPICAL WALL FIRE  
 BARRIER INSTALLATION INSTRUCTIONS  
 PROVIDED IN THIS SUBMITTAL.

\* CONTACT FACTORY FOR OTHER STYLES OF FIRE BARRIER

1/8" X 1" GALV. STEEL  
 HOLDDOWN STRIP  
 1/8" ALUM.  
 COVER  
 1/4" X 1 3/4" FH TAPCON  
 @ 8" O.C. [203mm]  
 & 2" x 24 GAUGE GALV. STEEL  
 TACK STRIP

Model	Nominal "JT"	Joint Opening "JT"	Seismic Min.	Thermal Min.	Thermal Max.	Seismic Max.	Movement	Total	Mat. Code
SPE-2-1 CONG_WPF	2"	2"	0.875"	1.5"	2.5"	3"	2.125"		SM2006

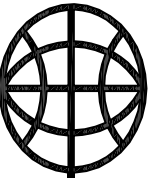
Representative:

Customer:

Project:

Location:

Project Number:



**MM**

MM SYSTEMS

50 MM WAY  
 PENDERGRASS, GA. 30567  
 PHONE: 706-824-7500  
 800-241-3460  
 FAX: 706-824-7501

www.mmsystemscorp.com

For Spec-Data, Installation Guides, or movement requirements, contact MMISC

**RIGHTS OF DESIGN**

All rights of design, detail, engineering and/or invention contained herein are the property of MM Systems Corporation and hereby reserved and are not to be reproduced or provided to any other party. MM Systems Corporation reserves the right to amend or withdraw any information contained herein without notice and will not be liable for any inaccuracy or ambiguity of said information.

Model: **SPE-2-1 CONG\_WPF**

Drawn by: LMP

Scale: NTS

Drawing Number:

SHT. OF

**SM2006**

Issue Date: 02-09-10