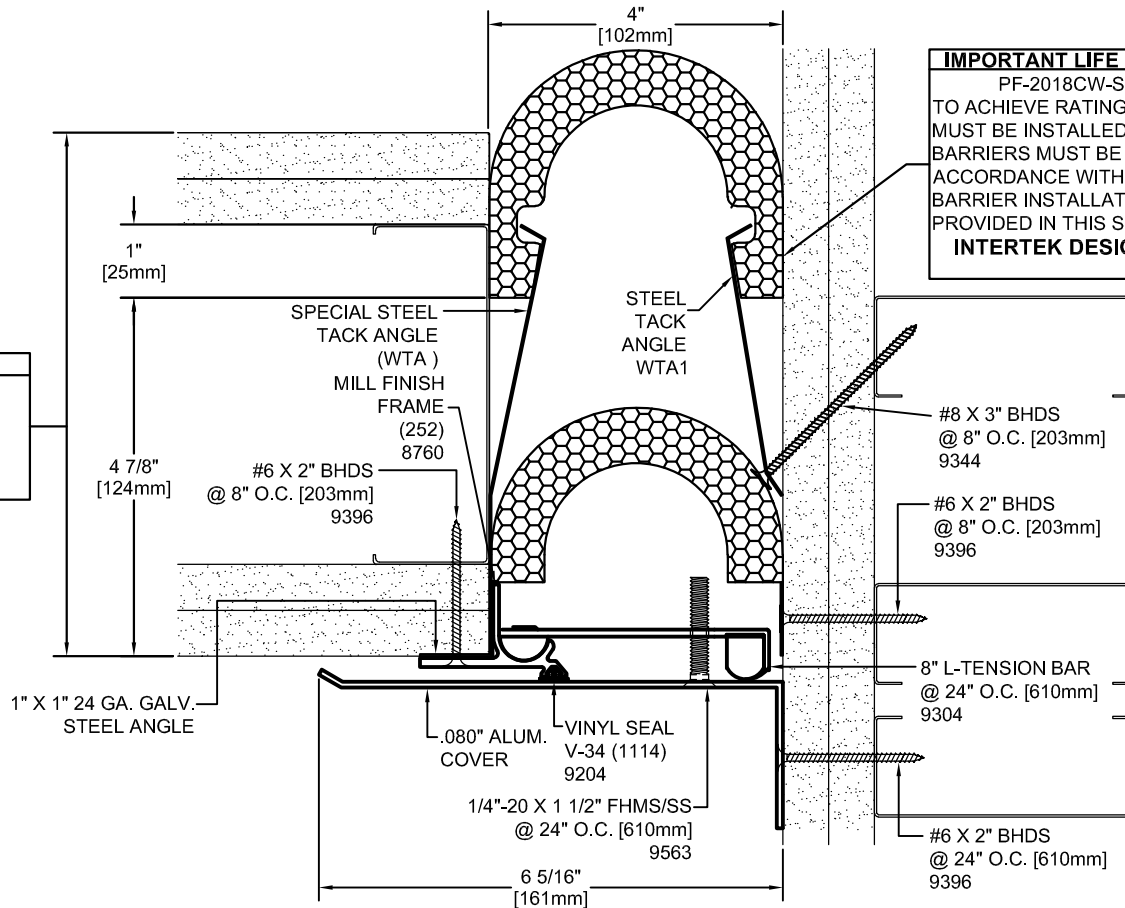


IMPORTANT LIFE SAFETY NOTE
 NOTE 2 BARRIERS REQUIRED.
 MINIMUM WALL DEPTH REQUIRED FOR RATING:
 7.125" FOR SINGLE SIDE INSTALLATION (SHOWN)
 ARCHITECT / CONTRACTOR MUST VERIFY PRIOR TO
 FABRICATION




IMPORTANT LIFE SAFETY PRODUCT NOTE
 PF-2018CW-SC-4-2 (OPTIONAL)
 TO ACHIEVE RATING, 2-HOUR FIRE BARRIER
 MUST BE INSTALLED IN 2-HOUR RATED WALL.
 BARRIERS MUST BE INSTALLED IN STRICT
 ACCORDANCE WITH TYPICAL WALL FIRE
 BARRIER INSTALLATION INSTRUCTIONS
 PROVIDED IN THIS SUBMITTAL.
INTERTEK DESIGN NO. MM/EJV 120-03

| Model | Nominal "JT" | Joint Opening "JT" | | | | Total Movement | Mat. Code |
|------------------------|--------------|--------------------|--------------|--------------|--------------|----------------|-----------|
| | | Seismic Min. | Thermal Min. | Thermal Max. | Seismic Max. | | |
| ASCL-4-2_STUD_2HWPF_SS | 4" | 2.375" | 3" | 5" | 6" | 3.625" | SW2104 |

SIGHT LINE MATCHES UP WITH ASC-4-4

CLEAR ANODIZE IS STANDARD FINISH

| | | | | | |
|---|--|-------------|-------------------------------|-----------------|-------------------------|
| Representative: | Customer: | Project: | Location: | Project Number: | |
|  MM MM SYSTEMS 50 MM WAY PENDERGRASS, GA. 30567 PHONE: 706-824-7500 800-241-3460 FAX: 706-824-7501 www.mmsystemscorp.com | RIGHTS OF DESIGN | | ASCL-4-2_STUD_2HWPF_SS | | |
| | All rights of design, detail, engineering and/or invention contained herein are the property of MM Systems Corporation and hereby reserved and are not to be reproduced or provided to any other party. MM Systems Corporation reserves the right to amend or withdraw any information contained herein without notice and will not be liable for any inaccuracy or ambiguity of said information. | | Model: | Scale: | Drawing Number: |
| | | | Drawn by: BOO | Scale: NTS | Issue Date: 06-27-16 |
| For Spec-Data, Installation Guides, or movement requirements, contact MMSC | | SHT. . OF . | | EJSW2104 | |