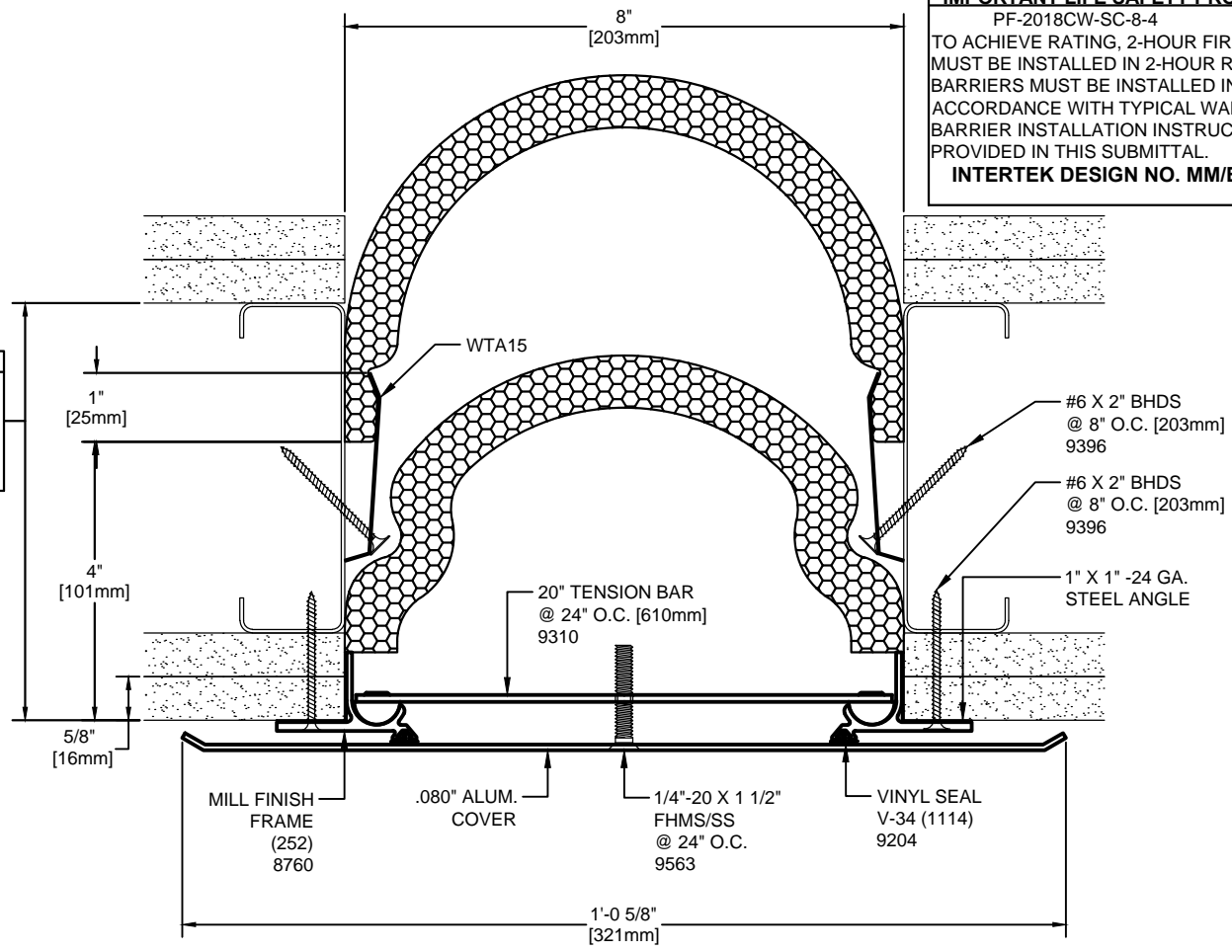


**IMPORTANT LIFE SAFETY PRODUCT NOTE**  
 PF-2018CW-SC-8-4  
 TO ACHIEVE RATING, 2-HOUR FIRE BARRIER MUST BE INSTALLED IN 2-HOUR RATED WALL. BARRIERS MUST BE INSTALLED IN STRICT ACCORDANCE WITH TYPICAL WALL FIRE BARRIER INSTALLATION INSTRUCTIONS PROVIDED IN THIS SUBMITTAL.  
**INTERTEK DESIGN NO. MM/EJV 120-03**

**IMPORTANT LIFE SAFETY NOTE**  
 NOTE 2 BARRIERS REQUIRED.  
 MINIMUM WALL DEPTH REQUIRED FOR RATING: 6" [152mm] FOR SINGLE SIDE INSTALLATION (SHOWN) ARCHITECT / CONTRACTOR MUST VERIFY PRIOR TO FABRICATION



Model	Nominal "JT"	Joint Opening "JT"				Total Movement	Mat. Code
		Seismic Min.	Thermal Min.	Thermal Max.	Seismic Max.		
ASC-8-4_STUD_2HWPF_SS	8"	2.5"	6"	10"	12"	9.5"	EJSW2010

SIGHT LINE MATCHES UP WITH ASCL-8-2 CLEAR ANODIZE IS STANDARD FINISH

Representative: \_\_\_\_\_ Customer: \_\_\_\_\_ Project: \_\_\_\_\_ Location: \_\_\_\_\_ Project Number: \_\_\_\_\_

**MM SYSTEMS**  
 50 MM WAY  
 PENDERGRASS, GA. 30567  
 PHONE: 706-824-7500  
 800-241-3460  
 FAX: 706-824-7501  
[www.mmsystemscorp.com](http://www.mmsystemscorp.com)

For Spec-Data, Installation Guides, or movement requirements, contact MMSC

**RIGHTS OF DESIGN**  
 All rights of design, detail, engineering and/or invention contained herein are the property of MM Systems Corporation and hereby reserved and are not to be reproduced or provided to any other party. MM Systems Corporation reserves the right to amend or withdraw any information contained herein without notice and will not be liable for any inaccuracy or ambiguity of said information.

**ASC-8-4\_STUD\_2HWPF\_SS**  
 Model:  
 Drawn by: BOO  
 Scale: NTS  
 Issue Date: 02-18-16  
 SHT. . OF .  
 Drawing Number: EJSW2010