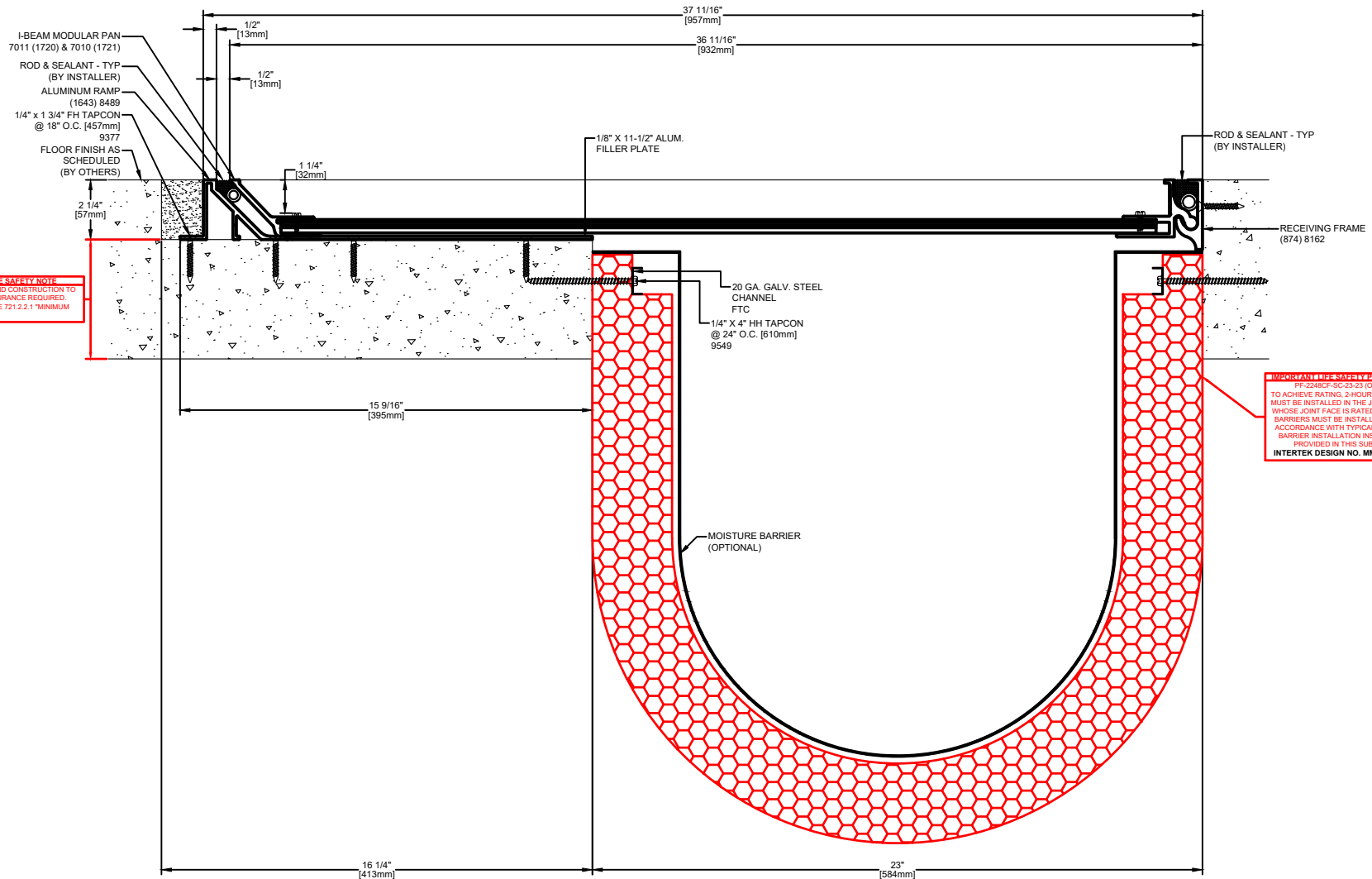



IMPORTANT LIFE SAFETY NOTE
 SLAB THICKNESS AND CONSTRUCTION TO MEET HOURLY ENCLAVURE REQUIRED. REFER TO IBC TABLE 721.2.2.1 "MINIMUM SLAB THICKNESS"



Model	Nominal "JT"	Joint Opening "JT"				Total Movement	Mat. Code
		Seismic Min.	Thermal Min.	Thermal Max.	Seismic Max.		
PDSE-2300-50-2.25H	23"	2"	22.625"	23.375"	34.5"	22.5"	EJNB5226
PDSE-2300-50-2.25H w/ PF-2248CF-SC-23-23	23"	5"	22.625"	23.375"	34.5"	29.5"	EJNB5226

SIGHT LINE MATCHES PDS-2300-100-2.25H

Representative:	Customer:	Project:	Location:	Project Number:
 MM MM SYSTEMS www.mm.systems	50 MM WAY PENDERGRASS, GA. 30567 PHONE: 706-824-7500 800-241-3460 FAX: 706-824-7501	RIGHTS OF DESIGN All rights of design, detail, engineering and/or invention contained herein are the property of MM Systems and hereby reserved and are not to be reproduced or provided to any other party. MM Systems reserves the right to amend or withdraw any information contained herein without notice and will not be liable for any inaccuracy or ambiguity of said information.	<h1 style="margin: 0;">PDSE-2300-50-2.25H</h1>	<h1 style="margin: 0;">EJNB5226</h1>
For Spec-Data, Installation Guides, or movement requirements, contact MM Systems			Drawn by: BOO Scale: NTS Issue Date: 08-25-21	Drawing Number:
			SHT. 1 OF 1	