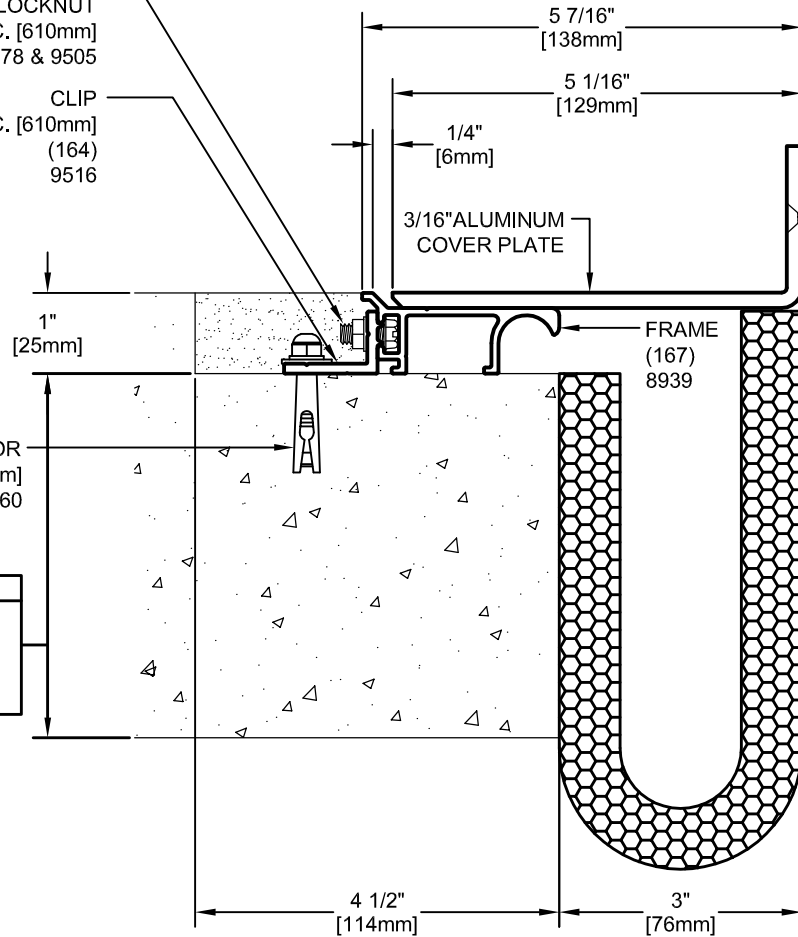


1/4 - 20 X 1/2" HHMS
& 1/4 - 20 LOCKNUT
@ 24" O.C. [610mm]
9378 & 9505

CLIP
@ 24" O.C. [610mm]
(164)
9516



#10-12 X 1" ANCHOR
(PLASTIC INSERT)
& #10 X 1" FHSMS/SS
@ 24" O.C. [610mm]
9357 & 9351

1/4" X 1 3/8" SLEEVE ANCHOR
@ 24" O.C. [610mm]
9360

IMPORTANT LIFE SAFETY NOTE
SLAB THICKNESS AND CONSTRUCTION TO MEET HOURLY ENDURANCE REQUIRED. REFER TO IBC TABLE 721.2.2.1 "MINIMUM SLAB THICKNESS".

IMPORTANT LIFE SAFETY PRODUCT NOTE
PF-2018F-SC-3-1.5 (OPTIONAL)
TO ACHIEVE RATING, 2-HOUR FIRE BARRIER MUST BE INSTALLED IN THE JOINT OPENING WHOSE JOINT FACE IS RATED FOR 2-HOUR. BARRIERS MUST BE INSTALLED IN STRICT ACCORDANCE WITH TYPICAL FLOOR FIRE BARRIER INSTALLATION INSTRUCTIONS PROVIDED IN THIS SUBMITTAL.
INTERTEK DESIGN NO. MM/EJH 120-01

Model	Nominal "JT"	Joint Opening "JT"				Total Movement	Mat. Code
		Seismic Min.	Thermal Min.	Thermal Max.	Seismic Max.		
LASFE-NB-3-.75	3"	0.0"	2.8125"	3.1875"	3.75"	3.75"	EJNB1804
LASFE-NB-3-.75 w/ PF-2018F-SC-3-1.5	3"	1.3125"	2.8125"	3.1875"	3.75"	2.4375"	EJNB1804

USE WITH LASF-NB-3-1.5

Representative:	Customer:	Project:	Location:	Project Number:
-----------------	-----------	----------	-----------	-----------------

MM SYSTEMS
50 MM WAY
PENDERGRASS, GA. 30567
PHONE: 706-824-7500
800-241-3460
FAX: 706-824-7501
www.mmsystemscorp.com

For Spec-Data, Installation Guides, or movement requirements, contact MMSC

RIGHTS OF DESIGN
All rights of design, detail, engineering and/or invention contained herein are the property of MM Systems Corporation and hereby reserved and are not to be reproduced or provided to any other party. MM Systems Corporation reserves the right to amend or withdraw any information contained herein without notice and will not be liable for any inaccuracy or ambiguity of said information.

LASFE-NB-3-.75

Model:
 Drawn by: LMP
 Scale: NTS
 Issue Date: 04-28-15
 Drawing Number: **EJNB1804**

SHT. . OF .