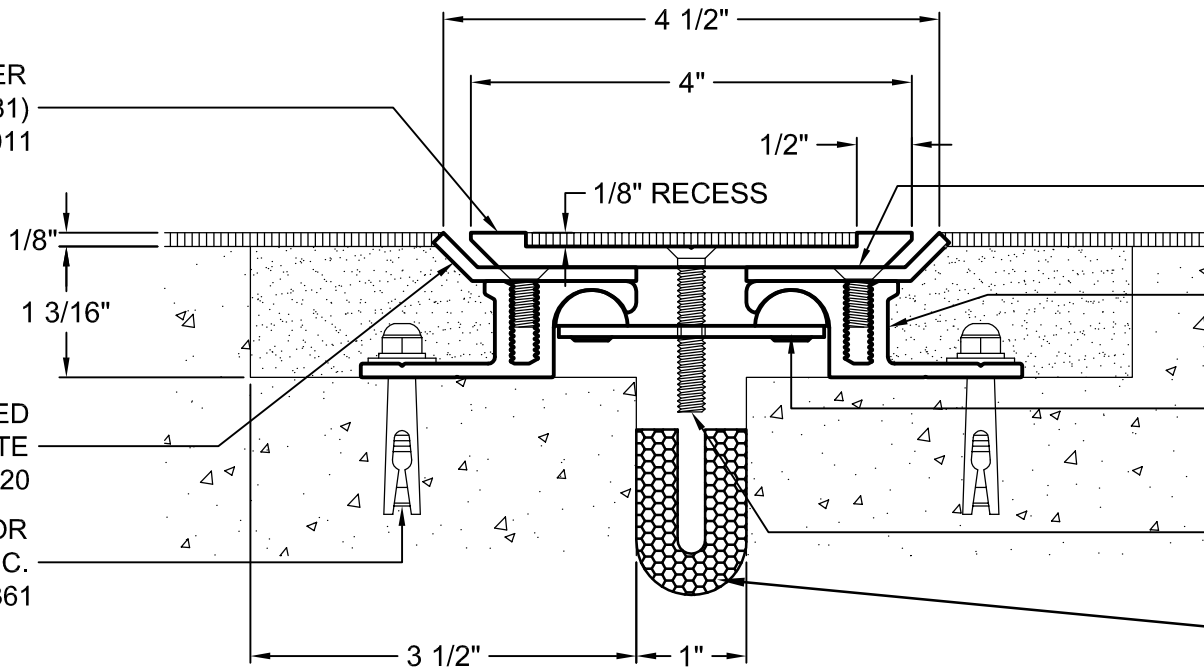


EXTRUDED ALUM. COVER
(1581)
8011



1/4 - 20 X 1/2" FHMS/SS
@ 24" O.C.
9552

FRAME
(166)
8938

4.5" TENSION BAR
@ 24" O.C.
9300

1/4 - 20 X 1 1/2" FHMS/SS
@ 24" O.C.
9371

FIRE BARRIER
(OPTIONAL)

FORMED
ALUMINUM PLATE
8720

SLEEVE ANCHOR
1/4" X 1 3/8" @ 24" O.C.
9361

LASB-NBR-1-1-.125R

ARCHITECT/CONTRACTOR NOTE:
ALL SUBASSEMBLY COMPONENTS TO BE PROVIDED IN 10'-0" OR 20'-0" STOCK LENGTHS UNLESS OTHERWISE NOTED. THE SPECIFIC SYSTEMS DICTATE THE LENGTHS PROVIDED.

| | | | | |
|-----------------|-----------|----------|-----------|-----------------|
| Representative: | Customer: | Project: | Location: | Project Number: |
|-----------------|-----------|----------|-----------|-----------------|

MM SYSTEMS

50 MM WAY
PENDERGRASS, GA. 30567
PHONE: 706-824-7500
800-241-3460
FAX: 706-824-7501

www.mmsystemscorp.com

For Spec-Data, Installation Guides, or movement requirements, contact MMSC

RIGHTS OF DESIGN

All rights of design, detail, engineering and/or invention contained herein are the property of MM Systems Corporation and hereby reserved and are not to be reproduced or provided to any other party. MM Systems Corporation reserves the right to amend or withdraw any information contained herein without notice and will not be liable for any inaccuracy or ambiguity of said information.

Model: **LASB-NBR-1-1-.125R**

| | | |
|------------------|-------------------------|----------------------------------|
| Drawn by: LMP | Scale: NTS | Drawing Number: NB1501 |
| SHT. . OF . | Issue Date: 08-22-12 | |