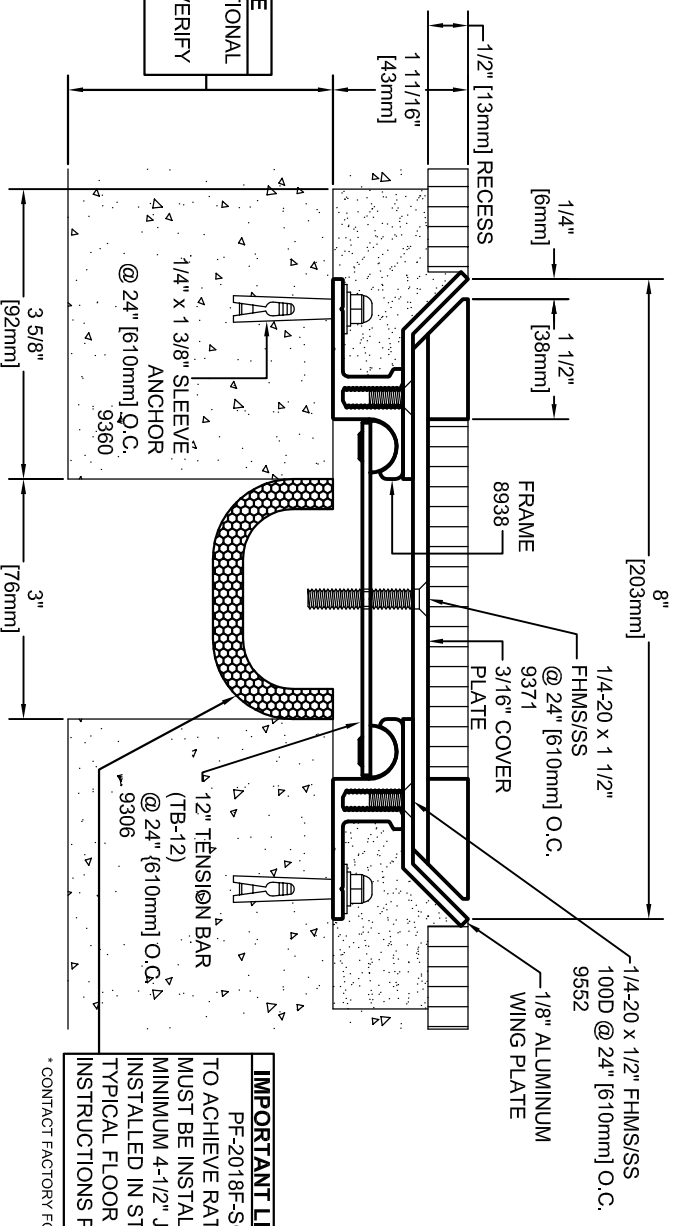


IMPORTANT LIFE SAFETY NOTE
 4-1/2" MINIMUM REQUIRED FOR OPTIONAL FIRE RATING TO BE AVAILABLE. ARCHITECT / CONTRACTOR MUST VERIFY PRIOR TO FABRICATION



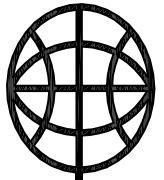
IMPORTANT LIFE SAFETY PRODUCT NOTE
 PF-2018F-SC-3-3 (OPTIONAL) TO ACHIEVE RATING. 2-HOUR FIRE BARRIER MUST BE INSTALLED IN 2-HOUR RATED SLAB, MINIMUM 4-1/2" JT. FACE. BARRIERS MUST BE INSTALLED IN STRICT ACCORDANCE WITH TYPICAL FLOOR FIRE BARRIER INSTALLATION INSTRUCTIONS PROVIDED IN THIS SUBMITTAL.

* CONTACT FACTORY FOR OTHER STYLES OF FIRE BARRIER

Model	Nominal "JT"	Joint Opening "JT"		Total Movement	Mat. Code
		Seismic Min.	Thermal Min.	Seismic Max.	
LASB-NBR-3-3-.5R	3"	0.25"	2.625"	3.75"	6"
LASB-NBR-3-3-.5R w/ PF-2018F-SC-3-3	3"	1.3125"	2.625"	3.75"	6"
				4.6875"	

ARCHITECT/CONTRACTOR NOTE:
 ALL SUBASSEMBLY COMPONENTS TO BE PROVIDED IN 10'-0" OR 20'-0" STOCK LENGTHS UNLESS OTHERWISE NOTED. THE SPECIFIC SYSTEMS DICTATE THE LENGTHS PROVIDED.

Representative: _____ Customer: _____ Project: _____ Location: _____ Project Number: _____



MM SYSTEMS

50 MM WAY
 PENDERGRASS, GA. 30567
 PHONE: 706-824-7500
 866-50 MM WAY
 866-506-6929
 FAX: 706-824-7501

www.mmsystemscorp.com

For Spec-Data, Installation Guides, or movement requirements, contact MIMISC

RIGHTS OF DESIGN

All rights of design, detail, engineering and/or invention contained herein are the property of MM Systems Corporation and hereby reserved and are not to be reproduced or provided to any other party. MM Systems Corporation reserves the right to amend or withdraw any information contained herein without notice and will not be liable for any inaccuracy or ambiguity of said information.

LASB-NBR-3-3-.5R

Model: _____ Drawing Number: _____
 Drawn by: LMP Scale: NTS
 SHT. OF Issue Date: 12-09-09