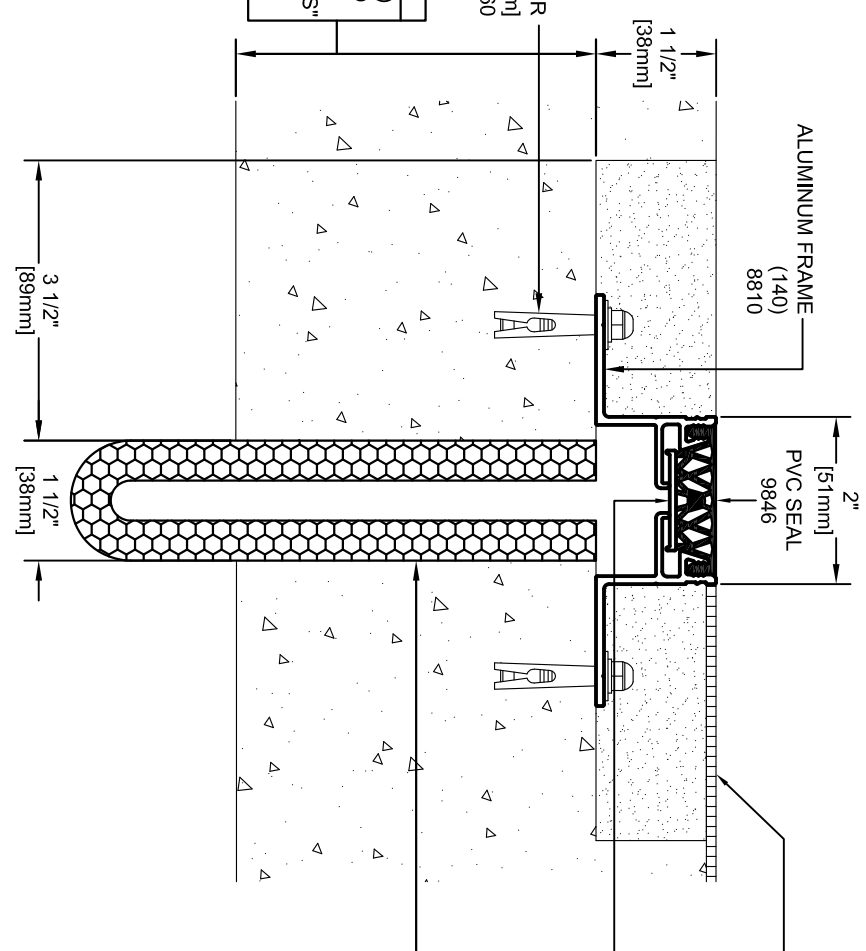


1/4" X 1 3/8" SLEEVE ANCHOR  
@ 24" O.C. [610 mm]  
9360



**IMPORTANT LIFE SAFETY NOTE**  
4-1/2" MINIMUM FACE OF SLAB (AS SHOWN) REQUIRED FOR OPTIONAL FIRE RATING TO BE AVAILABLE IN ACCORDANCE TO IBC TABLE 721.2.2.1 "MINIMUM SLAB THICKNESS" ARCHITECT / CONTRACTOR MUST VERIFY PRIOR TO FABRICATION.

**IMPORTANT LIFE SAFETY PRODUCT NOTE**  
PF-2018F-SC-2-1 (OPTIONAL) TO ACHIEVE RATING, 2-HOUR FIRE BARRIER MUST BE INSTALLED IN 2-HOUR RATED SLAB, MINIMUM 4-1/2" JT. FACE. BARRIERS MUST BE INSTALLED IN STRICT ACCORDANCE WITH TYPICAL FLOOR FIRE BARRIER INSTALLATION INSTRUCTIONS PROVIDED IN THIS SUBMITTAL.

\* CONTACT FACTORY FOR OTHER STYLES OF FIRE BARRIER

Model	Nominal "JT"	Joint Opening "JT"		Total	Mat.
		Seismic Min.	Thermal Min.	Seismic Max.	Code
FS-150-12H	1.50"	1.25"	1.25"	2"	FE1004
FS-150-12H w/ PF-2018F-SC-2-1	1.50"	1.25"	1.25"	2.75"	FE1004

**ARCHITECT/CONTRACTOR NOTE:**  
ALL SUBASSEMBLY COMPONENTS TO BE PROVIDED IN 10'-0" OR 20'-0" STOCK LENGTHS UNLESS OTHERWISE NOTED. THE SPECIFIC SYSTEMS DICTATE THE LENGTHS PROVIDED.

Representative: \_\_\_\_\_ Customer: \_\_\_\_\_

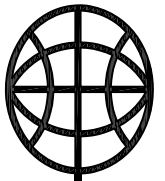
Project: \_\_\_\_\_

Location: \_\_\_\_\_

Project Number: \_\_\_\_\_

Approved by: \_\_\_\_\_ Date: \_\_\_\_\_

SEAL NOTE: SPECIFY SEAL COLOR  
STANDARD COLORS:  
 CARBON (BLACK)  PRAIRIE (BEIGE)  
 FOG (GRAY)  LUNAR (WHITE)  
\*CUSTOM COLOR AVAILABLE IN MINIMUM QUANTITIES 100 LF.  
CONTACT MM FOR PRICING & AVAILABILITY.



**MM**  
MM SYSTEMS

50 MM WAY  
PENDERGRASS, GA. 30567  
PHONE: 706-824-7500  
800-241-3460  
FAX: 706-824-7501

www.mmssystemscorp.com

For Spec-Data, Installation Guides, or movement requirements, contact MMSC

**RIGHTS OF DESIGN**

All rights of design, detail, engineering and/or invention contained herein are the property of MM Systems Corporation and hereby reserved and are not to be reproduced or provided to any other party. MM Systems Corporation reserves the right to amend or withdraw any information contained herein without notice and will not be liable for any inaccuracy or ambiguity of said information.

Model:

**FS-150-12H**

Drawn by:

CEL

Scale:

NTS

Drawing Number:

**FE1004**

SHT. OF

Issue Date:  
05-04-18