

COVER PLATE

(843)
8914
1/4" - 20 X 5/8" FHMS/SS
@ 24" O.C. [610mm]

ALUMINUM FRAME
9369

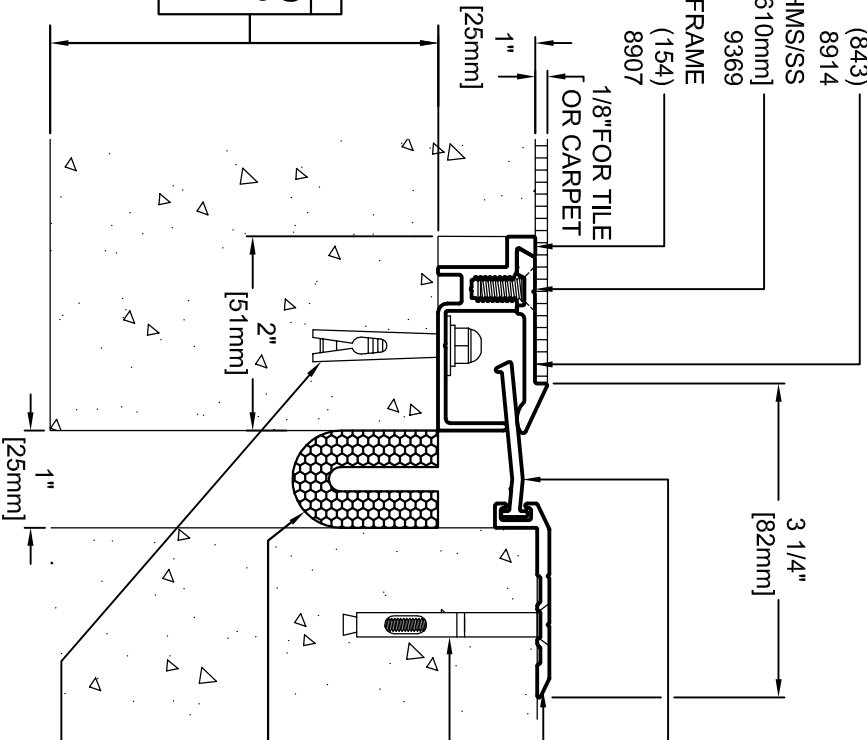
(154)
8907
1/8" FOR TILE
OR CARPET

3 1/4"
[82mm]

SUPPORT PLATE
(250)
8910

ALUMINUM FRAME
(940)
8915

1/4" X 2" FH LOK/BOLT
@ 24" O.C. [610mm]
9577



IMPORTANT LIFE SAFETY NOTE

4-1/2" MINIMUM FACE OF SLAB (AS SHOWN) REQUIRED FOR OPTIONAL FIRE RATING TO BE AVAILABLE.
ARCHITECT / CONTRACTOR MUST VERIFY PRIOR TO FABRICATION.

IMPORTANT LIFE SAFETY PRODUCT NOTE

PF-2018F-SC-1-1 (OPTIONAL)
TO ACHIEVE RATING, 2-HOUR FIRE BARRIER MUST BE INSTALLED IN 2-HOUR RATED SLAB, MINIMUM 4-1/2" JT. FACE. BARRIERS MUST BE INSTALLED IN STRICT ACCORDANCE WITH TYPICAL FLOOR FIRE BARRIER INSTALLATION INSTRUCTIONS PROVIDED IN THIS SUBMITTAL.

* CONTACT FACTORY FOR OTHER STYLES OF FIRE BARRIER
1/4" X 1 3/8" SLEEVE ANCHOR
@ 24" O.C. [610mm]
9360

Model	Nominal "JT"	Joint Opening "JT"		Total Movement	Mat. Code	
		Seismic Min.	Thermal Min.			Thermal Max.
HFxREM-1-0.5	1"	0.5"	0.75"	1.25"	1.5"	CC1901
HFxREM-1-0.5 w/ PF-2018F-SC-1-1	1"	0.875"	0.875"	1.25"	1.5"	CC1901

ARCHITECT/CONTRACTOR NOTE:
ALL SUBASSEMBLY COMPONENTS TO BE PROVIDED IN 10'-0" OR 20'-0" STOCK LENGTHS UNLESS OTHERWISE NOTED. THE SPECIFIC SYSTEMS DICTATE THE LENGTHS PROVIDED.

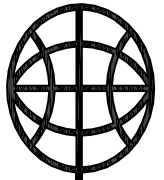
Representative: _____ Customer: _____

Project: _____

Location: _____

Approved by: _____ Date: _____

Project Number: _____



MM
MM SYSTEMS

50 MM WAY
PENDERGRASS, GA. 30567
PHONE: 706-824-7500
800-241-3460
FAX: 706-824-7501

www.mmssystemscorp.com

For Spec-Data, Installation Guides, or movement requirements, contact MM/SC

RIGHTS OF DESIGN

All rights of design, detail, engineering and/or invention contained herein are the property of MM Systems Corporation and hereby reserved and are not to be reproduced or provided to any other party. MM Systems Corporation reserves the right to amend or withdraw any information contained herein without notice and will not be liable for any inaccuracy or ambiguity of said information.

HFxREM-1-0.5

Model: _____
Drawn by: MLS
Scale: NTS
SHT. OF .
Issue Date: 12-16-09

Drawing Number:
CC1901