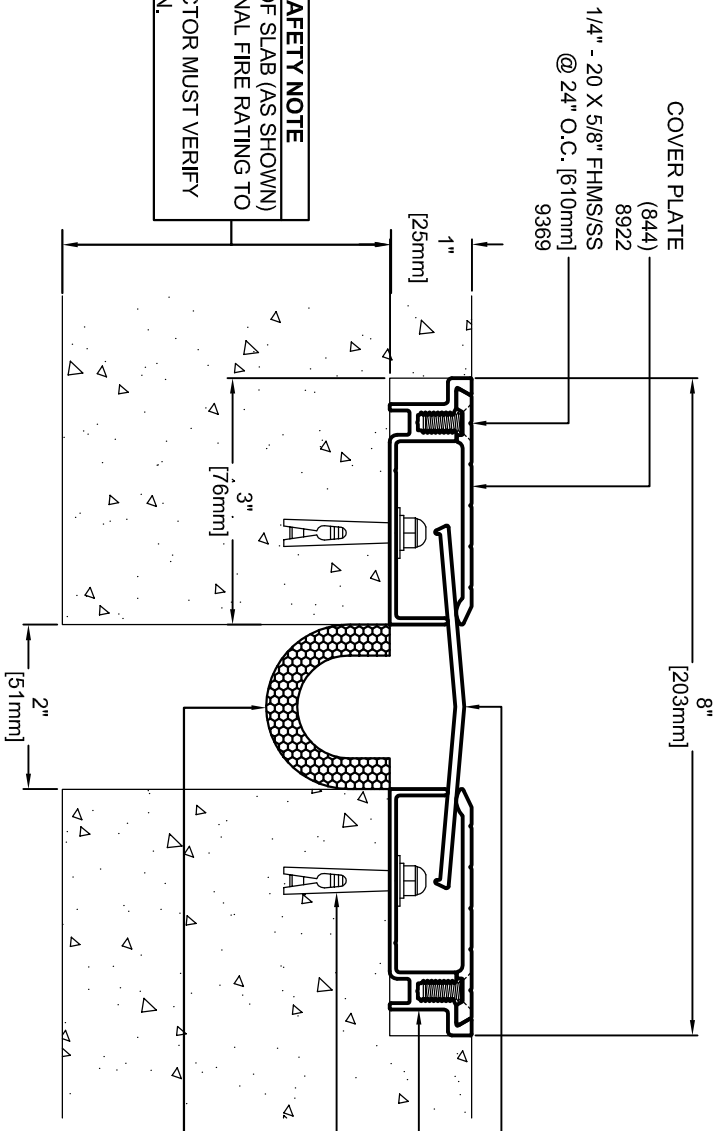


**IMPORTANT LIFE SAFETY NOTE**  
 4-1/2" MINIMUM FACE OF SLAB (AS SHOWN) REQUIRED FOR OPTIONAL FIRE RATING TO BE AVAILABLE.  
 ARCHITECT / CONTRACTOR MUST VERIFY PRIOR TO FABRICATION.



**IMPORTANT LIFE SAFETY PRODUCT NOTE**  
 PF-2018F-SC-2-2 (OPTIONAL)  
 TO ACHIEVE RATING: 2-HOUR FIRE BARRIER MUST BE INSTALLED IN 2-HOUR RATED SLAB, MINIMUM 4-1/2" JT. FACE BARRIERS MUST BE INSTALLED IN STRICT ACCORDANCE WITH TYPICAL FLOOR FIRE BARRIER INSTALLATION INSTRUCTIONS PROVIDED IN THIS SUBMITTAL.

\* CONTACT FACTORY FOR OTHER STYLES OF FIRE BARRIER

Model	Nominal "JT"	Joint Opening "JT"	Total Movement	Mat. Code
HFX-2-2	2"	Seismic Min. 0" Thermal Min. 0.875"	Seismic Max. 4.0" Thermal Max. 4.0"	CC1205
HFX-2-2 w/ PF-2018F-SC-2-2	2"	Seismic Min. 1.5" Thermal Min. 1.5"	Seismic Max. 4.0" Thermal Max. 2.5"	CC1205

**ARCHITECT/CONTRACTOR NOTE:**  
 ALL SUBASSEMBLY COMPONENTS TO BE PROVIDED IN 10'-0" OR 20'-0" STOCK LENGTHS UNLESS OTHERWISE NOTED. THE SPECIFIC SYSTEMS DICTATE THE LENGTHS PROVIDED.

Representative:

Customer:

Project:

Location:

Approved by: \_\_\_\_\_ Date: \_\_\_\_\_

Project Number:



**MM**  
 MM SYSTEMS

50 MM WAY  
 PENDERGRASS, GA. 30567  
 PHONE: 706-824-7500  
 800-241-3460  
 FAX: 706-824-7501

www.mmssystemscorp.com

For Spec-Data, Installation Guides, or movement requirements, contact MMISC

**RIGHTS OF DESIGN**

All rights of design, detail, engineering and/or invention contained herein are the property of MM Systems Corporation and hereby reserved and are not to be reproduced or provided to any other party. MM Systems Corporation reserves the right to amend or withdraw any information contained herein without notice and will not be liable for any inaccuracy or ambiguity of said information.

**HFX-2-2**

Model:  
 Drawn by: MLS

SHT. OF

Scale: NTS  
 Issue Date: 11-09-09

Drawing Number:  
**CC1205**